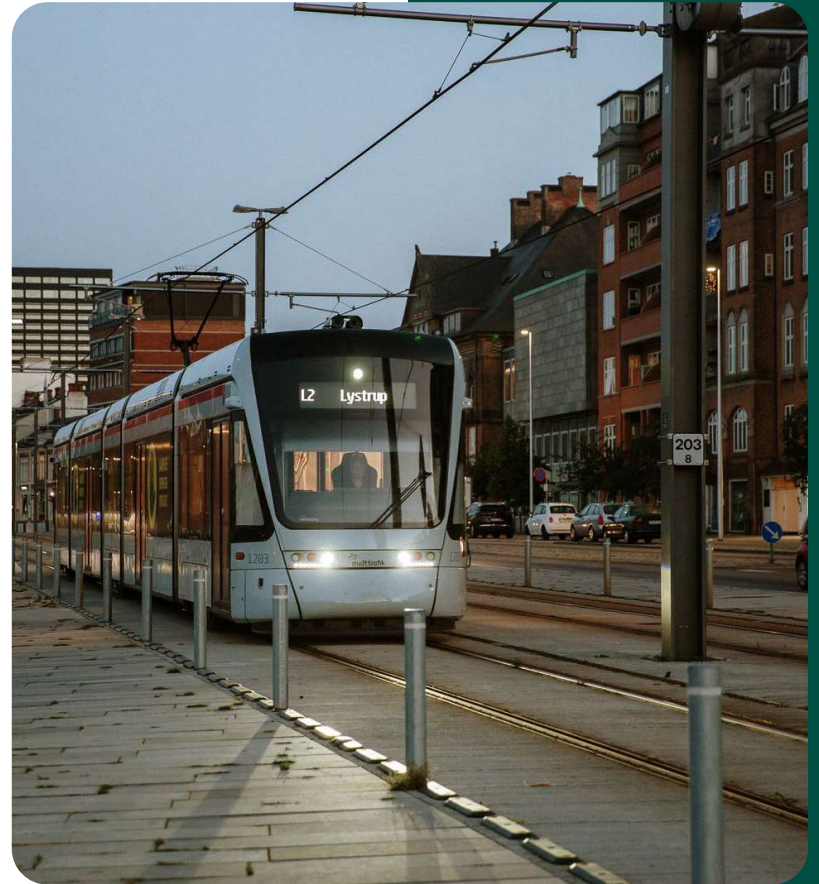
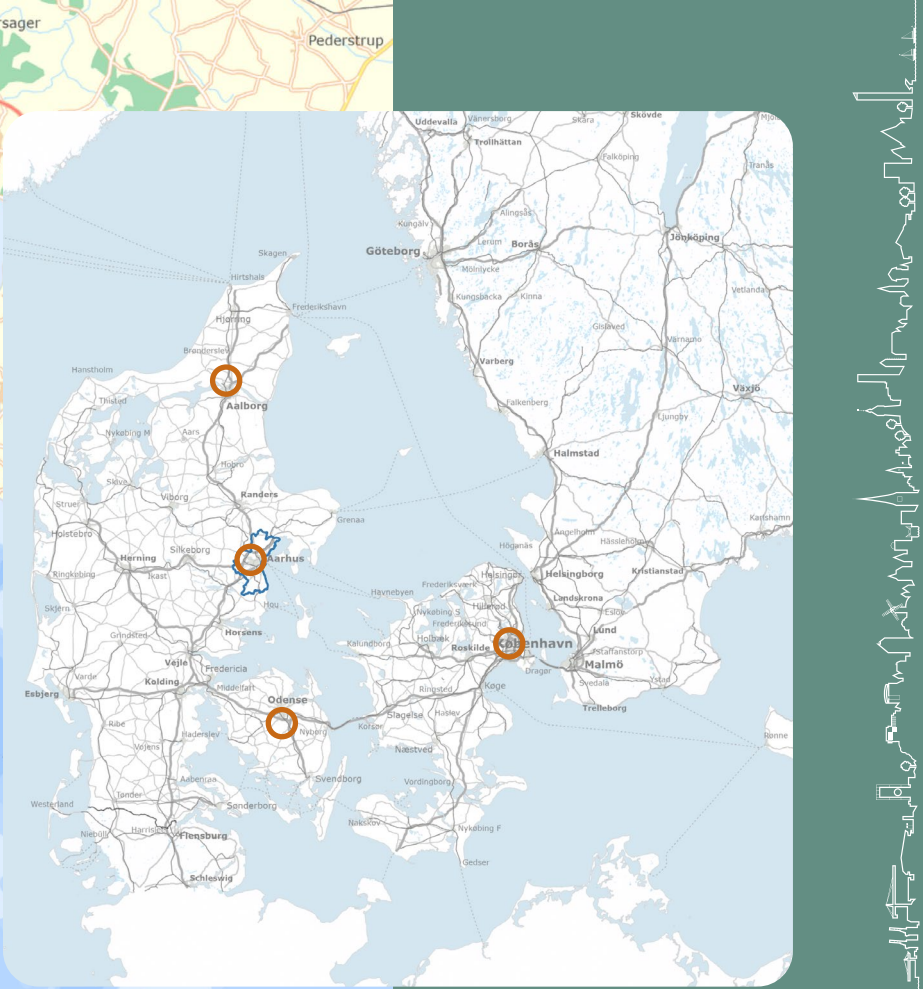




SUMP for Aarhus

Online presentation
17-04-2026





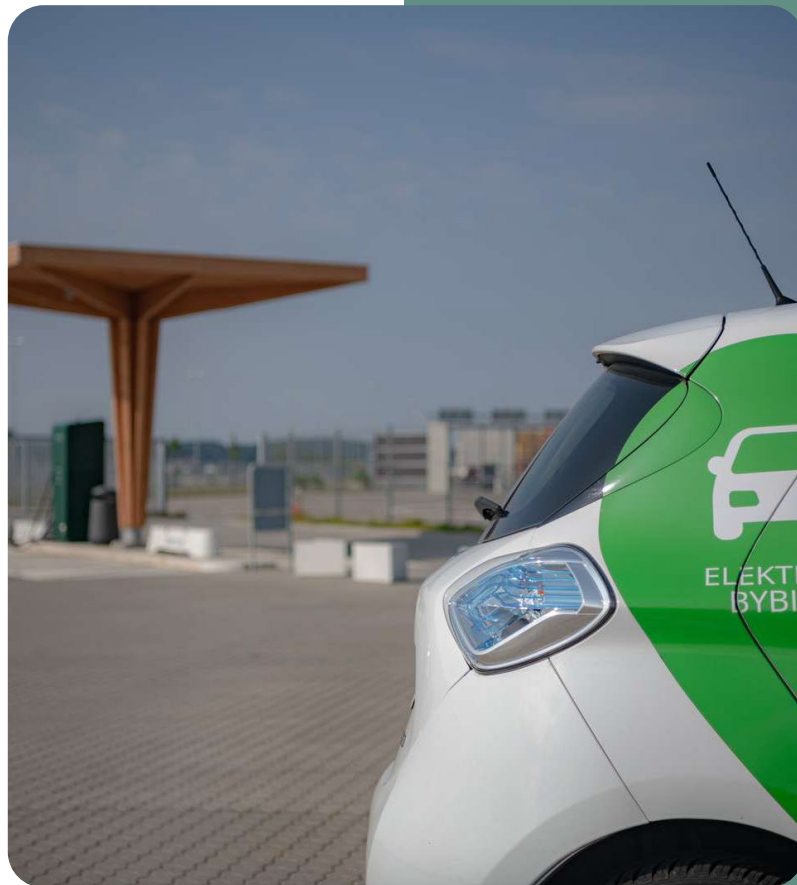



Green Deal

2024

SUMP

2025



An aerial photograph of a city, likely Oslo, showing a dense urban landscape with various buildings, streets, and a large stadium with a colorful roof in the center. The sky is overcast and hazy.

A CLIMATE NEUTRAL CITY
The Climate Agreement (2024) dictates the goal for the
transport sector:

A reduction of 270,000 tonnes CO₂e in 2030

A ROBUST MOBILITY SYSTEM

1 million residents and 500,000 jobs in Business Region
Aarhus (Aarhus and 11 surrounding municipalities)

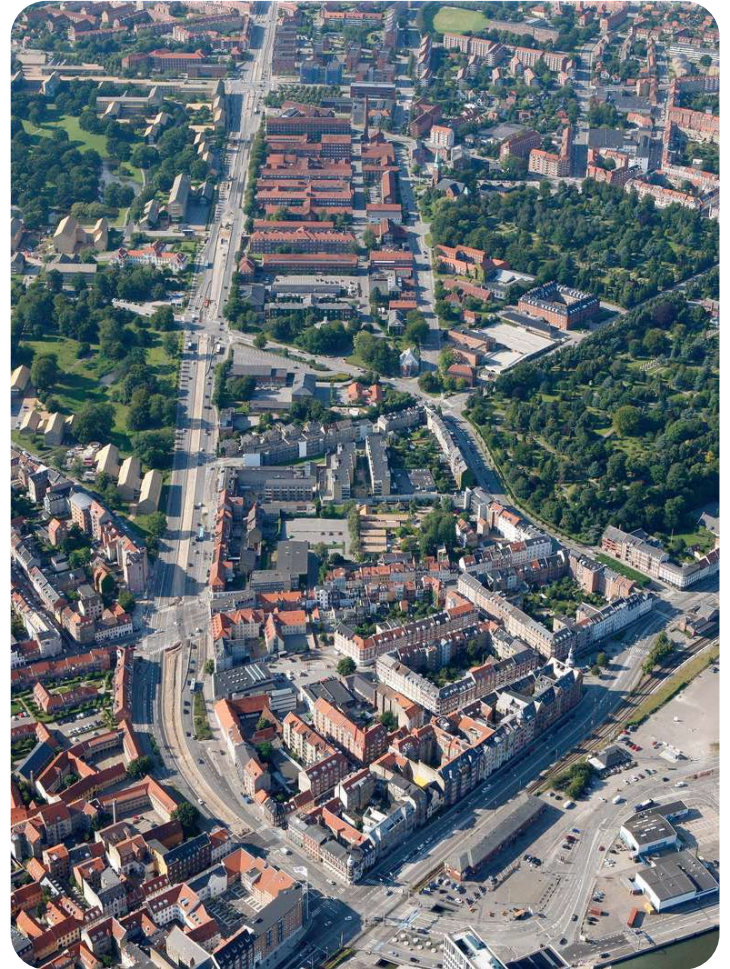
450,000 residents in Aarhus by 2050
(2012: 315.000 - 2024: 370.000)



**A GREEN AND ATTRACTIVE CITY WITH MORE ROOM FOR
URBAN LIFE**

Topics

- **Significant Investments in Public Transport**
- **Better conditions for biking and walking**
- **Flip the mobility hierarchy, calmer and more livable neighborhoods and 15 minutes city**
- **Regulations for car driving – but continued access to and from the downtown**





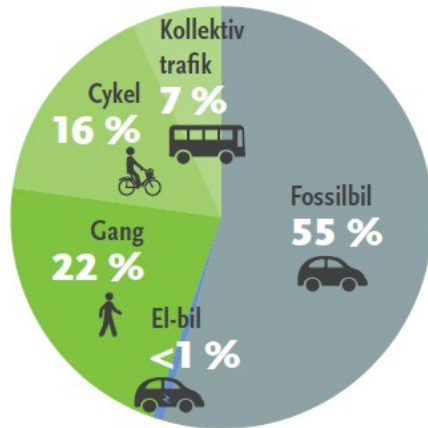
Objectives

- 50% more passengers in Busses and Light Rail in 2030
- 50% more cycling trips in 2030
- 60% share of cycling, walking and public transport trips in 2030
- 80% of all school pupils must be self transporting in 2030

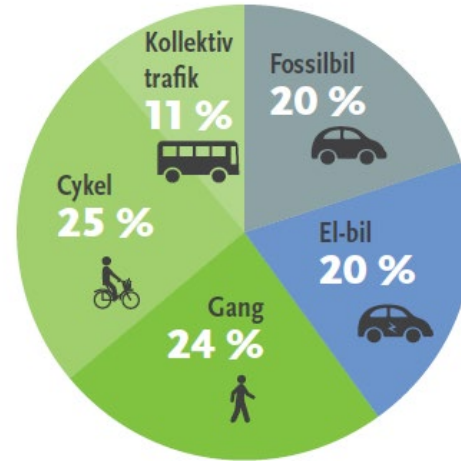
Travel mode goals

2019

Hele Aarhus Kommune

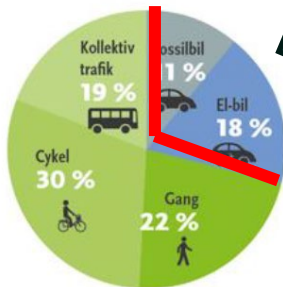
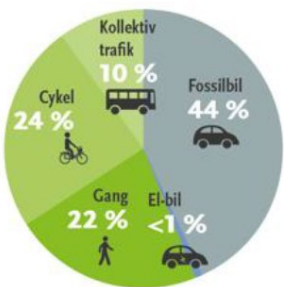


2030

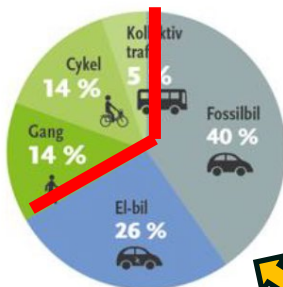
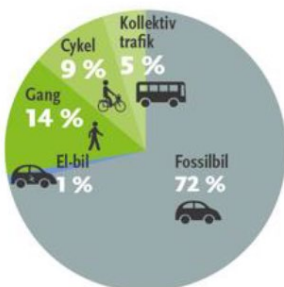


Difference between City and countryside

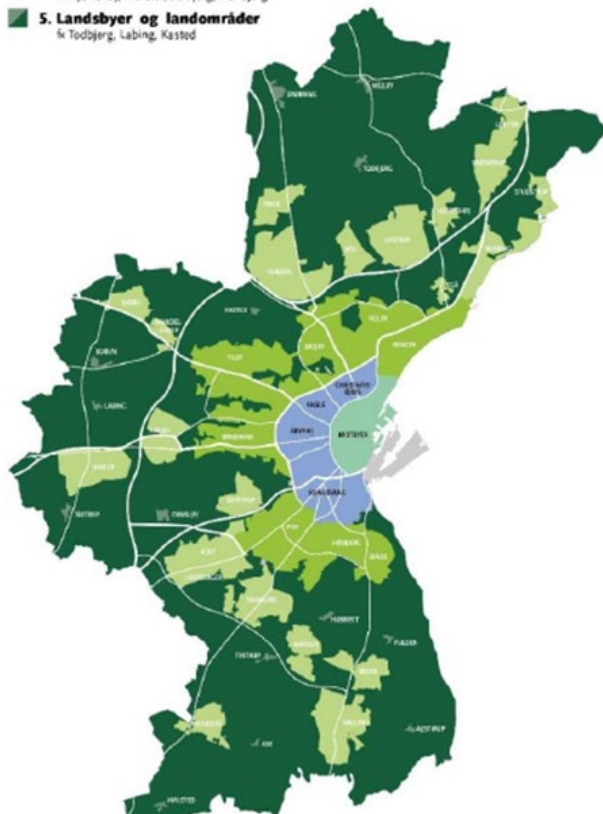
Den sammenhængende by inden for ringvejen



Selvstændige bysamfund og landområder



- 1. Midtbyen**
fx City, Frederiksberg, Ceresbyen
- 2. Bydele ml. ringgade og ringvej**
fx Christiansbjerg, Åbyhøj, Kongsvang
- 3. Bydele i den sammenhængende by uden for ringvejen**
fx Brabrand, Viby, Tilst, Risskov
- 4. Selvstændige bysamfund**
fx Hjortshøj, Mårslet, Solbjerg, Tranbjerg
- 5. Landsbyer og landområder**
fx Todbjerg, Labing, Kasted



Topics

- **Significant Investments in Public Transport**
- **Better conditions for biking and walking**
- **Flip the mobility hierarchy, calmer and more livable neighborhoods and 15 minutes city**
- **Regulations for car driving – but continued access to and from the downtown**





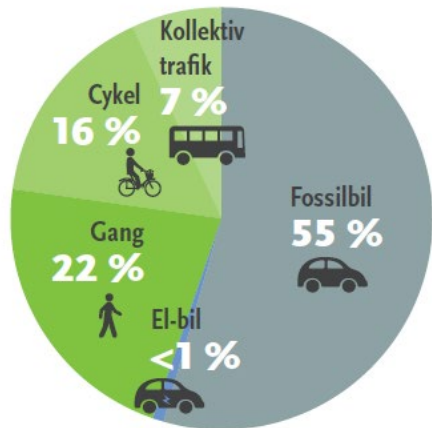
Objectives

- 50% more passengers in Busses and Light Rail in 2030
- 50% more cycling trips in 2030
- 60% share of cycling, walking and public transport trips in 2030
- 80% of all school pupils must be self transporting in 2030

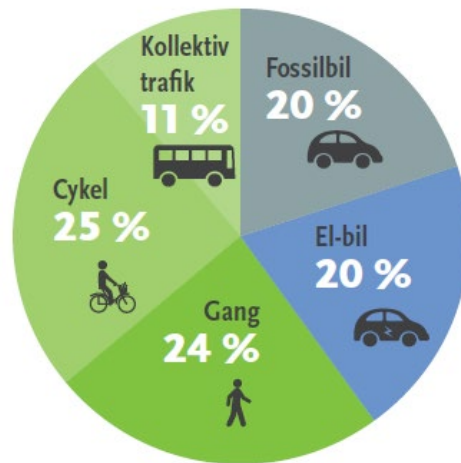
Travel mode goals

2019

Hele Aarhus Kommune

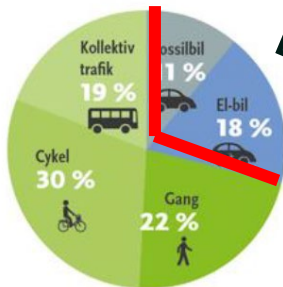
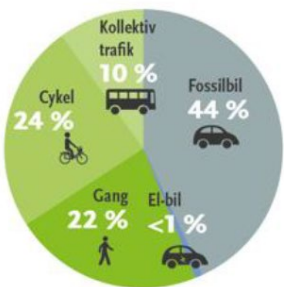


2030

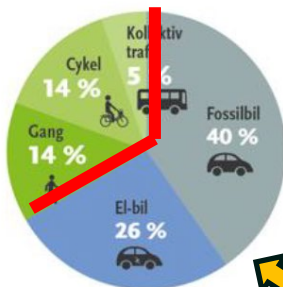
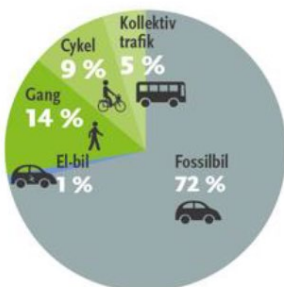


Difference between City and countryside

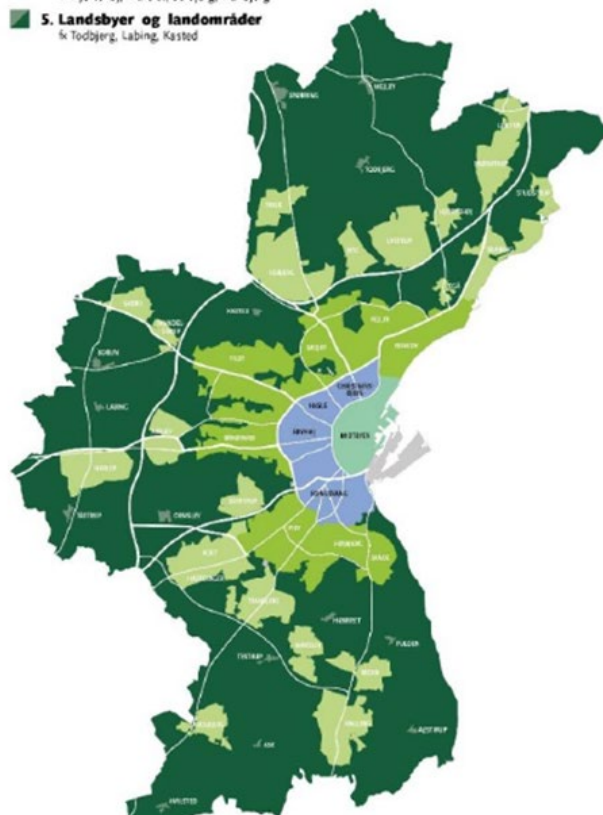
Den sammenhængende by inden for ringvejen



Selvstændige bysamfund og landområder



- 1. Midtbyen**
fx City, Frederiksberg, Ceresbyen
- 2. Bydele ml. ringgade og ringvej**
fx Christiansbjerg, Åbyhøj, Kongsvang
- 3. Bydele i den sammenhængende by uden for ringvejen**
fx Brabrand, Viby, Tilst, Risskov
- 4. Selvstændige bysamfund**
fx Hjortshøj, Mårslet, Solbjerg, Tranbjerg
- 5. Landsbyer og landområder**
fx Todbjerg, Labing, Kasted

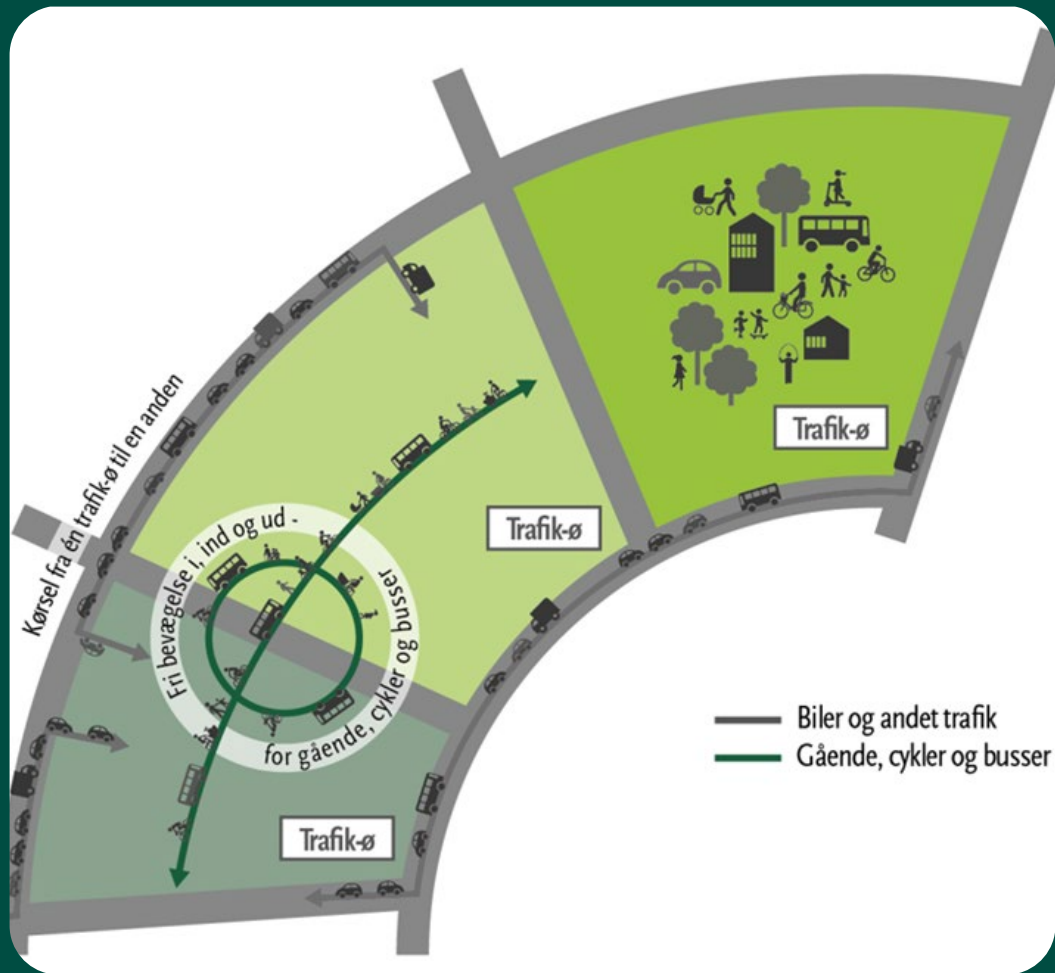


Bike Infrastructure

- **Upgrading bike infrastructure, complete new bike projects and fix missing links**
- **More bike "highways"**
- **Climate adaptation - also for bike infrastructure**
- **More bike parking – especially at mobility hubs**
- **Pilot project: lending bikes for free**



Traffic Islands

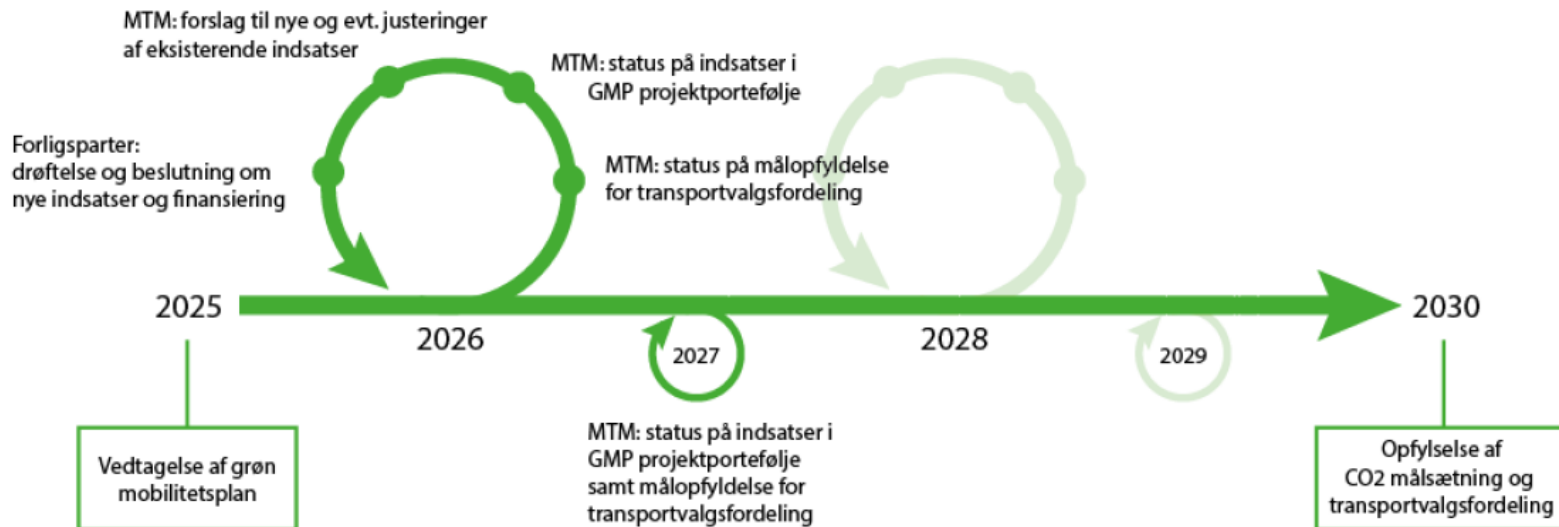


LOWER SPEEDS AND CAR FREE SCHOOL ZONES

- **+10 mio. euros for traffic safety and projects for school roads**
- **”Hjertezoner” at all schools**
- **Lower speeds in local neighborhoods (traffic islands and at schools)**



Process



Questions?



Gustav Friis

City of Aarhus
guf@aarhus.dk