

REASON

Support bearing in flap operating mechanism (with and without flap/aileron interconnection system).

EFFECTIVITY

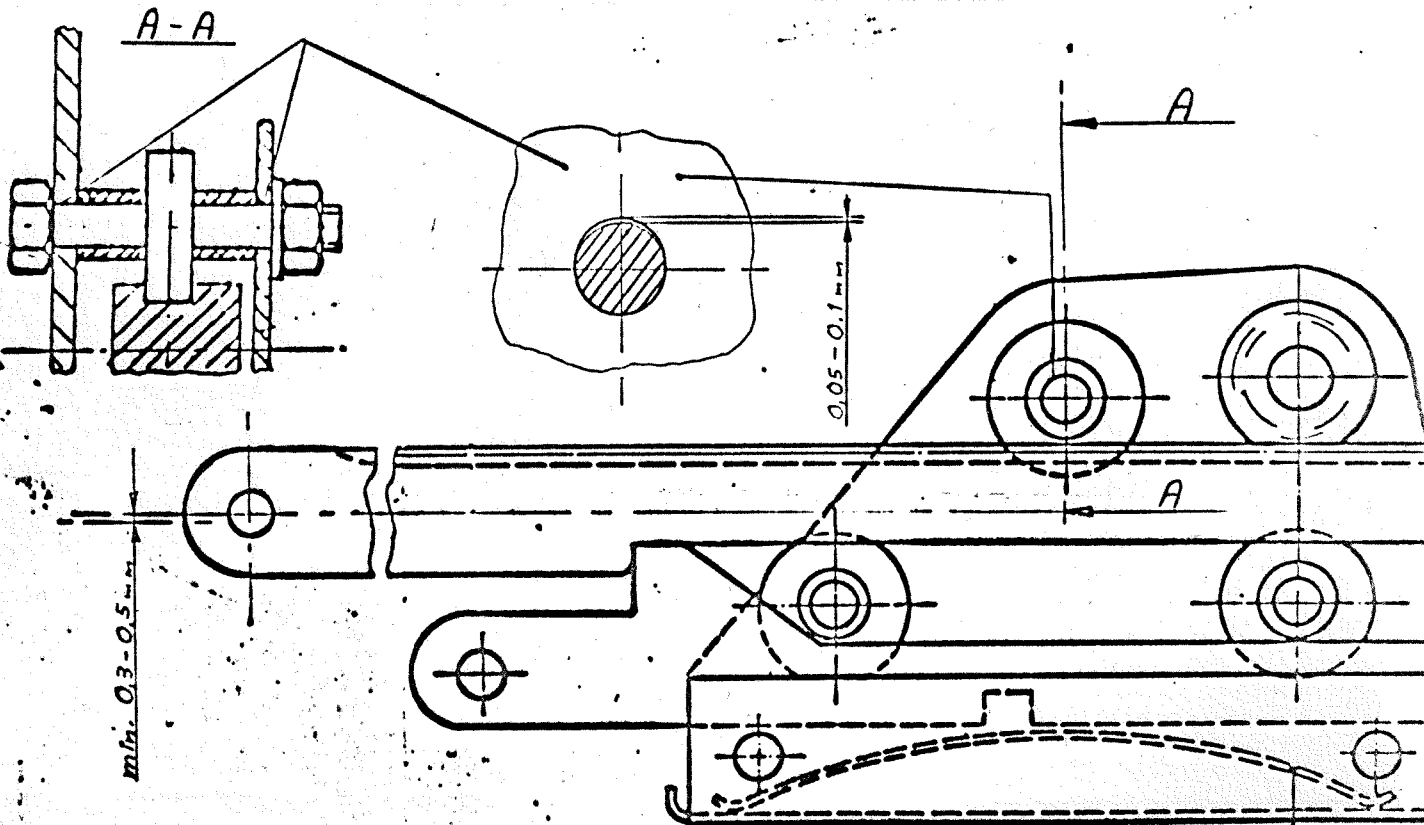
PIK-20 and 20 B models, all serial numbers.

DESCRIPTION

There has been some support bearing failures due to dirt on gear rack and too small tolerance between bearing and rack (See fig. 1). The broken bearing particles may lock the flap control.

COMPLIANCE

Within 25 flight hours.



INSTRUCTIONS

(See fig. 1)

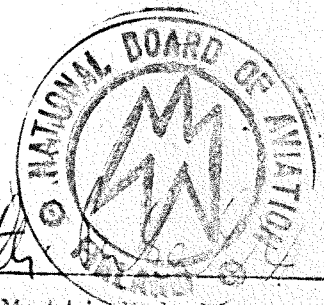
1. Detach the flap push rod from the gear rack.
2. Check the free play of the gear rack with all deflections. The play must be min.  $0.3 - 0.5 \text{ mm}$  depending on the deflection. It is smallest at  $+90^\circ$  flap setting.

3. If there is play enough at all deflections, no further action is required.
4. If there is no play at any deflection, the operating mechanism must be detached (See Service Bulletin M 12 June 4, 1976 Instructions 1 to 2) and all dirt removed from the gear rack.
5. If there is still no play the rack must be detached. See M 12 instructions 3 to 4.
6. File about 0.05 to 0.1 mm carefully away from the support bearing axle holes in side plates (with fine  $\phi$  5.0 mm to 5.5 mm file). See fig. 1. Check the result with the bolt.
7. Change the support bearing type NSK or SKF 626 2Z.
8. Assemble the mechanism (See M 12 instructions 9 to 10).
9. Check the free play.
10. Continue according to M 12, instructions 11 to 13.

NOTE: Do not use any grease on the gear rack.

WEIGHT AND BALANCE

No effect.



APPROVED BY THE NATIONAL  
BOARD OF AVIATION IN  
FINLAND

*Matti Puhakka*  
Matti Puhakka