

**SISÄLTÖ - INNEHÅLL - CONTENTS****Koskee seuraavia merikarttoja - Berörda sjökort – Affected charts**

<b>Kartta</b>	<b>Tiedonanto</b>	<b>Sivu</b>	<b>Edeltävä tiedonanto</b>
<b>Kort</b>	<b>Notis</b>	<b>Sida</b>	<b>Föregående notis</b>
<b>Chart</b>	<b>Notice</b>	<b>Page</b>	<b>Previous update</b>
17 (INT 1249)	1	2	33/360/2015
17 (INT 1249)	2	4	1/1/2016
32 (INT 1195)	4	8	35-36/383/2015
44 (INT 1135)	5	8	35-36/384/2015
47 (INT 1138)	6(T)	9	35-36/384/2015
53 (INT 1144)	7	10	35-36/384/2015
54 (INT 1145)	7	10	35-36/384/2015
103.C	1	2	10/115/2015
113.B	5	8	35-36/384/2015
162 (INT 1157)	4	8	26/260/2015
431	8	10	33/368/2015
957	6(T)	9	35-36/387/2015
A/621	1	2	32/337/2015
A/622	1	2	10/115/2015
A/622	2	4	1/1/2016
A/623	1	2	33/360/2015
A/623	2	4	1/1/2016
C/752	4	8	31/330(T)/2015
E/812	5	8	28/291/2015
F/812	5	8	28/291/2015
F/823	6(T)	9	16/170/2015
G/836	7	10	23/233(T)/2015

## *I Suomenlahti – Finska viken – Gulf of Finland*

\* 1.


 17, 103.C  
 A/621/622/623/623.4

Suomi. Porvoo. Kalvön. Kaapelit. Karttamerkintä.

Finland. Borgå. Kalvön. Kablar. Kartmarkering.

Finland. Porvoo. Kalvön. Submarine cables. Insert in chart.


### A. Lisää kaapeli välille – Inför kabel mellan – Insert submarine cable between:

	WGS 84			Kartat-Korten-Charts
1)	60°15.290'N	25°32.086'E	Kalvön	17, 103.C, A/622/623
2)	60°15.439'N	25°32.799'E		17, 103.C, A/621/622/623
3)	60°15.435'N	25°32.869'E	Tövholmen	"


### B. Lisää kaapeli välille – Inför kabel mellan – Insert submarine cable between:

	WGS 84			Kartat-Korten-Charts
1)	60°14.857'N	25°32.461'E	Kalvön	17, A/621/622/623
2)	60°14.892'N	25°32.503'E		"
3)	60°15.102'N	25°33.248'E	Bässholmen	"

### C. Lisää kaapeli välille – Inför kabel mellan – Insert submarine cable between:

	WGS 84			Kartat-Korten-Charts
1)	60°14.856'N	25°32.463'E	Kalvön	17, A/621/622/623
2)	60°14.889'N	25°32.504'E		"
3)	60°14.934'N	25°32.962'E		"
4)	60°14.867'N	25°33.327'E	Halsholmen	"

### D. Lisää kaapeli välille – Inför kabel mellan – Insert submarine cable between:

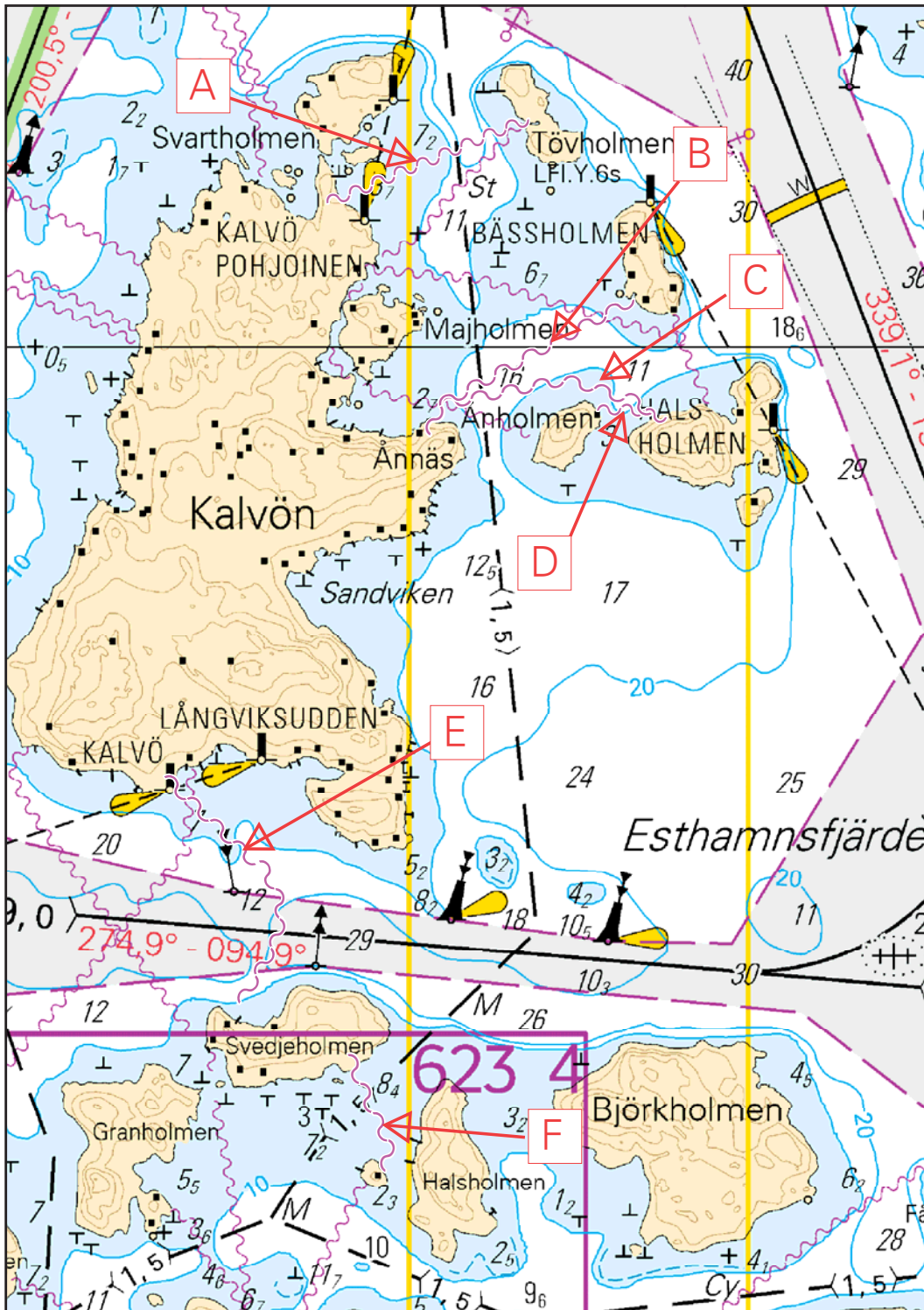
	WGS 84			Kartat-Korten-Charts
1)	60°14.866'N	25°33.326'E	Halsholmen	17, A/621/622/623
2)	60°14.872'N	25°33.111'E	Anholmen	"

### E. Lisää kaapeli välille – Inför kabel mellan – Insert submarine cable between:

	WGS 84			Kartat-Korten-Charts
1)	60°14.141'N	25°31.451'E	Kalvön	17, A/621/622/623
2)	60 13.970	25 31.811		17, A/621/622
3)	60 13.894	25 31.866		"
4)	60 13.843	25 31.843		"
5)	60 13.693	25 31.677	Svedjeholmen	17, A/621/622/623

## F. Lisää kaapeli välille – Inför kabel mellan – Insert submarine cable between:

	WGS 84			Kartat-Korten-Charts
1)	60°13.593'N	25°32.152'E	Svedjeholmen	17, A/622/623/623.4
2)	60°13.436'N	25°32.283'E		"
3)	60°13.399'N	25°32.257'E	Lilla Halsholmen	"



Ei merikartan mittakaavassa - Inte i sjökortets skala - Not to scale of chart

(FTA, Helsinki/Helsingfors 2015)

\* 2.

17

A/622/623/623.4

Suomi. Porvoo. Långön. Bodö. Kaapelit. Karttamerkintä.


Finland. Borgå. Långön. Bodö. Kablar. Kartmarkering.

Finland. Porvoo. Långön. Bodö. Submarine cables. Insert in chart.


## A. Lisää kaapeli välille – Inför kabel mellan – Insert submarine cable between:

	WGS 84			Kartat-Korten-Charts
1)	60°13.121'N	25°30.307'E	Aparholmen	17, A/622/623/623.4
2)	60 13.056	25 30.431		"
3)	60 12.963	25 30.775		"
4)	60 12.931	25 30.831		"
5)	60 12.605	25 31.030		"
6)	60 12.508	25 31.023		"
7)	60 12.438	25 30.977		"
8)	60 12.365	25 30.874		"
9)	60 12.110	25 30.238		17, A/623/623.4
10)	60 12.094	25 30.224		"
11)	60 12.080	25 30.229	Brännskär	"

## B. Lisää kaapeli välille – Inför kabel mellan – Insert submarine cable between:

	WGS 84			Kartat-Korten-Charts
1)	60°12.783'N	25°30.448'E	Långön	17, A/622/623/623.4
2)	60 12.792	25 30.445		"
3)	60 12.800	25 30.455		"
4)	60 12.846	25 30.587		"
5)	60 12.859	25 30.684		"
6)	60 12.844	25 30.739		"
7)	60 12.829	25 30.735	Långön	"


## C. Lisää kaapeli välille – Inför kabel mellan – Insert submarine cable between:

	WGS 84			Kartat-Korten-Charts
1)	60°12.080'N	25°30.239'E	Brännskär	17, A/623/623.4
2)	60 12.105	25 30.251		"
3)	60 12.085	25 30.449		17, A/622/623/623.4
4)	60 12.024	25 30.491		"
5)	60 11.343	25 30.181		17, A/623/623.4
6)	60 11.174	25 30.177		"
7)	60 11.160	25 30.262	Rågskär	"


## D. Lisää kaapeli välille – Inför kabel mellan – Insert submarine cable between:

	WGS 84			Kartat-Korten-Charts
1)	60°11.154'N	25°30.263'E	Rågskär	17, A/623/623.4
2)	60 11.123	25 30.095		"
3)	60 11.066	25 30.076		"
4)	60 10.589	25 30.903	Andersholmen	17, A/623


**E. Lisää kaapeli välille – Inför kabel mellan – Insert submarine cable between:**

	WGS 84			Kartat-Korten-Charts
1)	60°11.154'N	25°30.262'E	Rågskär	17, A/623/623.4
2)	60 11.127	25 30.093		"
3)	60 10.927	25 30.035		17, A/623
4)	60 10.811	25 29.978		"
5)	60 10.691	25 29.880		"
6)	60 10.610	25 29.692		"
7)	60 10.576	25 29.674		"
8)	60 10.552	25 29.684	Svartholmen	"


**F. Lisää kaapeli välille – Inför kabel mellan – Insert submarine cable between:**

	WGS 84			Kartat-Korten-Charts
1)	60°10.552'N	25°29.682'E	Svartholmen	17, A/623
2)	60 10.611	25 29.580		"
3)	60 10.609	25 29.471		"
4)	60 10.577	25 29.393		"
5)	60 10.558	25 29.377		"
6)	60 10.526	25 29.382		"


**G. Lisää kaapeli välille – Inför kabel mellan – Insert submarine cable between:**

	WGS 84			Kartat-Korten-Charts
1)	60°11.155'N	25°30.263'E	Rågskär	17, A/623/623.4
2)	60 11.059	25 29.529		"
3)	60 10.959	25 28.963		17, A/623
4)	60 10.775	25 28.574		"
5)	60 10.718	25 28.564		"
6)	60 10.656	25 28.619	Långholmen	"


**H. Lisää kaapeli välille – Inför kabel mellan – Insert submarine cable between:**

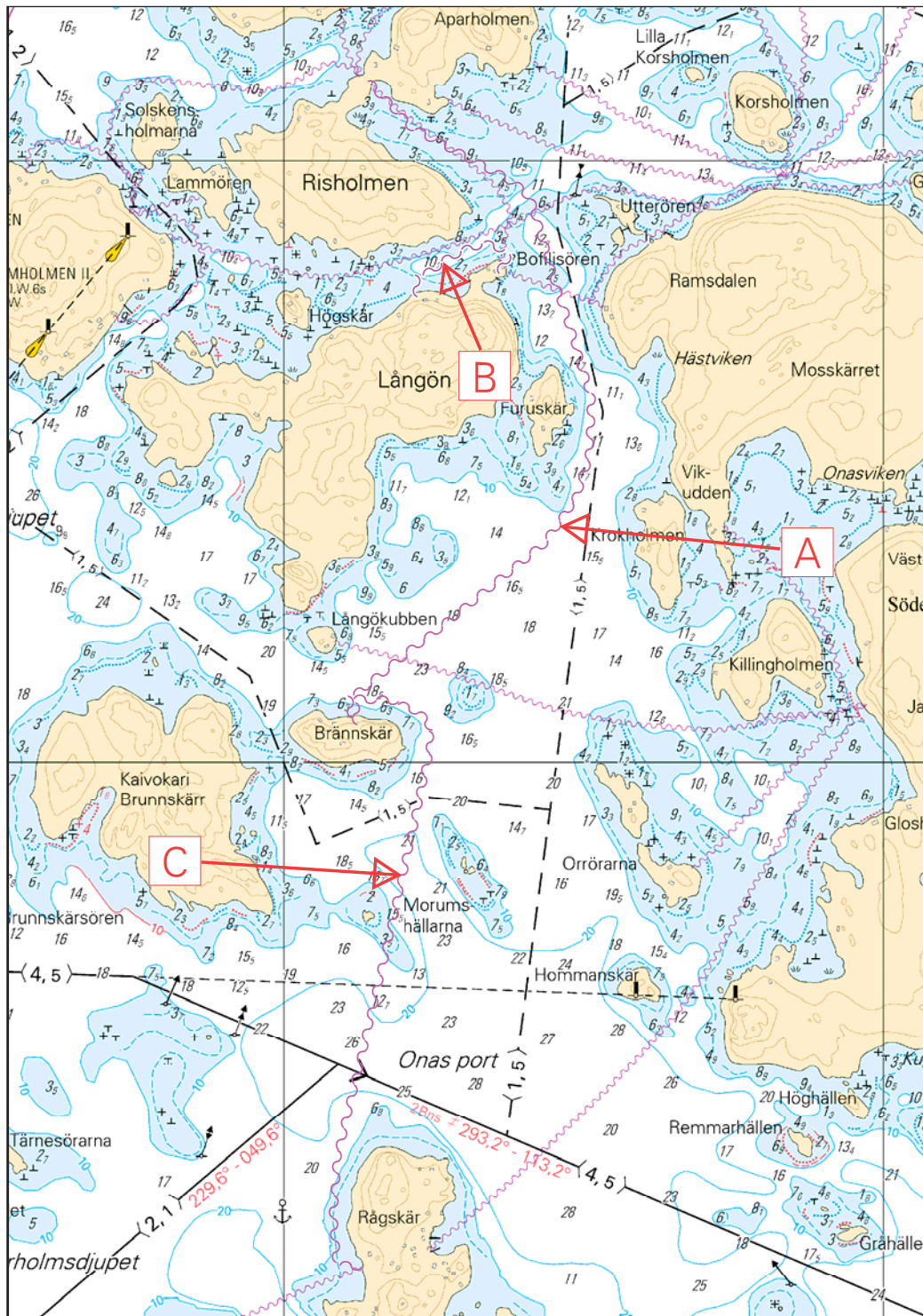
	WGS 84			Kartat-Korten-Charts
1)	60°10.654'N	25°28.616'E	Långholmen	17, A/623
2)	60 10.679	25 28.522		"
3)	60 10.661	25 28.383		"
4)	60 10.592	25 28.315		"
5)	60 10.509	25 28.337		"
6)	60 10.482	25 28.387	Motlandet	"

**I. Lisää kaapeli välille – Inför kabel mellan – Insert submarine cable between:**

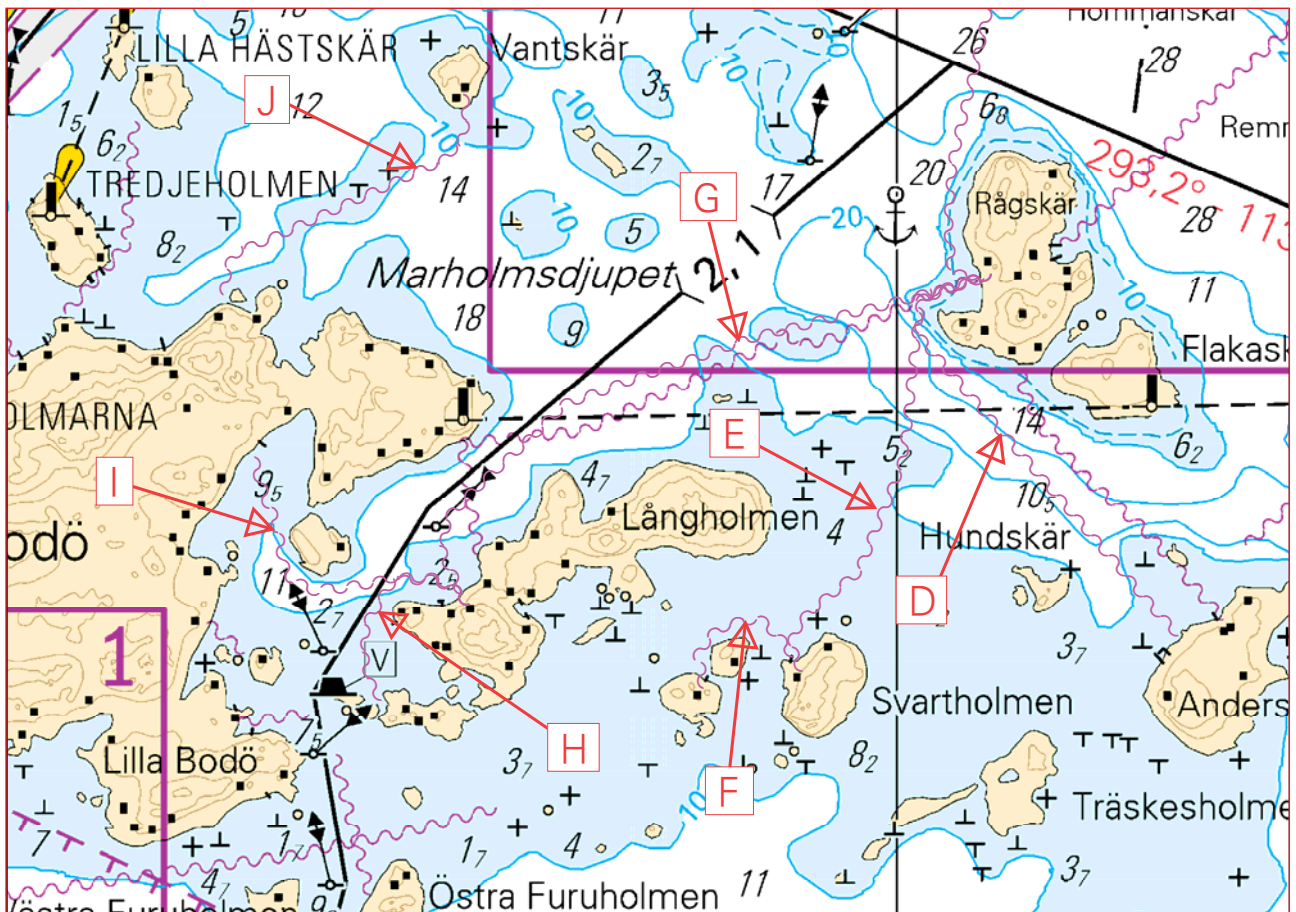
	WGS 84			Kartat-Korten-Charts
1)	60°10.654'N	25°28.615'E	Långholmen	17, A/623
2)	60 10.681	25 28.524		"
3)	60 10.665	25 28.214		"
4)	60 10.681	25 28.078		"
5)	60 10.880	25 27.955	Bodö	"

J. Lisää kaapeli välille – Inför kabel mellan – Insert submarine cable between:

	WGS 84			Kartat-Korten-Charts
1)	60°11.116'N	25°27.862'E	Bodö	17, A/623
2)	60 11.195	25 27.908		"
3)	60 11.341	25 28.563		"
4)	60 11.375	25 28.621		"
5)	60 11.425	25 28.632	Vantskär	"



Ei merikartan mittakaavassa - Inte i sjökortets skala - Not to scale of chart



Ei merikartan mittakaavassa - Inte i sjökortets skala - Not to scale of chart

(FTA, Helsinki/Helsingfors 2015)

3.

Venäjä. Viipurin väylä. Loisto Vihrevoj (Tuppuransaari) sammutettu.

Ryssland. Farleden till Viborg. Fyren Vihrevoj (Tuppuransaari) släckt.

Russia. Vyborg channel. Light Vihrevoj extinguished.

TM/UfS/NtM [30/357\(T\)/2013](#) Kumotaan/Utgår/Cancelled

Nimi/Namn/Name	WGS 84	
VIHREVOJ	60°33.83'N	28°26.76'E

(NtM 51/7207, St. Petersburg 2015)

**II Saaristomeri ja Ahvenanmeri**  
**Skärgårdshavet och Ålands hav**  
**Archipelago Sea and Sea of Åland**

\*4.

32, 162  
C/752/752.2

Suomi. Saaristomeri. Ahvenanmaa. Lumparland. Långnäs. Långnäs–Bomarsund -väylä (6.4 m). Poistetut linjamerkit. Karttamerkinän muutos.

Finland. Skärgårdshavet. Åland. Lumparland. Långnäs. Farleden Långnäs–Bomarsund (6.4 m). Indragna ensmärken. Ändrad kartmarkering.

Finland. Archipelago Sea. Åland. Lumparland. Långnäs. Långnäs–Bomarsund channel (6.4 m). Discontinued leading beacons. Amend chart.

Ref: TM/UfS/NtM [15/155/2015](#)

Poistetut linjamerkit – Indragna ensmärken – Discontinued leading beacons

Poista – Stryk – Delete:

No		WGS 84	
1)	6151 (C4585.4)	LÅNGNÄSIN SATAMA alempi, nedre, front	60°07.070'N 20°17.787'E
2)	6346 (C4585.41)	LÅNGNÄSIN SATAMA ylempi, övre, rear	60°06.979'N 20°17.774'E

Poista taululinja – Stryk enslinjen – Delete leading line

(FTA, Turku/Åbo 2015)

**III Pohjanlahti – Bottniska viken – Gulf of Bothnia**

\*5.

44, 113.B  
E, F/812/812.2

Suomi. Selkämeri. Kristiinankaupunki. Uusi väylä (1.0 m). Uudet viitat. Karttamerkintä.

Finland. Bottenhavet. Kristinestad. Ny farled (1.0 m). Nya prickar. Kartmarkering.

Finland. Sea of Bothnia. Kristinestad. New channel (1.0 m). New spar buoys. Insert in chart.

A. Uusi väylä – Ny farled – New channel


Lisää – Inför – Insert:

Väylän keskilinja – Farledens mittlinje – Fairway centre line

	WGS 84	1.0 m
1)	62°15.595'N	21°22.699'E
2)	62°15.575'N	21°22.457'E
3)	62°15.519'N	21°22.135'E



**B. Uudet viitat – Nya prickar – New spar buoys****Lisää – Inför – Insert:**

	No			WGS 84	
1)	80489		Vasen-BB-Port	62°15.563'N	21°22.464'E
2)	80490		Vasen-BB-Port	62°15.530'N	21°22.224'E
3)	80491		Oikea-SB-Starboard	62°15.541'N	21°22.210'E

(FTA . Vaasa/Vasa 2015)



**\*6.(T)****47, 957****F/823****Ruotsi. Selkämeri. Merenkurkku. TSS in Norra Kvarken. Talvikaudeksi poistetut poijut ja viitat. Virtuaali AIS.****Sverige. Bottenhavet. Norra Kvarken. TSS in Norra Kvarken. Bojar och prickar tillfälligt indragna för vintern. Virtuall AIS.****Sweden. Sea of Bothnia. The Quark. TSS in Norra Kvarken. Buoys and spar buoys temporarily withdrawn for the winter. Virtual AIS.**

Ajankohta: Toistaiseksi





Tidpunkt: Tills vidare




Time: Until further notice

**Seuraavat** reittijakojärjestelmän poijut ja viitat on poistettu talven ajaksi. Turvalaitteet on korvattu tilapäisesti virtuaalisilla AIS -kohteilla.**Följande** bojar och prickar i trafiksepareringen i Norra Kvarken har dragits in för vintern. Utmärkningen har tillfälligt ersatts av virtuella AIS-mål.**Following** buoys and spar buoys in the traffic separation scheme have been withdrawn for the winter. Virtual AIS-targets will temporarily replace the ordinary buoyage.**A. Poijut – Bojar – Buoys**

Nimi/Namn/Name			WGS 84		Kartat-Korten-Charts
1) Odelgrund		Itä-Ost-East	63°25.53'N	20°33.93'E	47, 957
2) Östra Kvarken		Pohjois-Nord-North	63°32.89'N	20°51.03'E	47, 957, F/823

**B. Viitat – Prickar – Spar buoys**

			WGS 84		Kartat-Korten-Charts
1)		Vasen-BB-Port	63°35.40'N	21°03.33'E	47, 957, F/823
2)		Vasen-BB-Port	63 33.50	20 52.35	"
3)		Vasen-BB-Port	63 32.71	20 45.38	"
4)		Vasen-BB-Port	63 32.24	20 41.09	47, 957

5)		Oikea-SB-Starboard	63 32.29	20 46.25	47, 957, F/823
6)		Oikea-SB-Starboard	63 31.18	20 43.77	"
7)		Vasen-BB-Port	63 28.13	20 37.93	47, 957

(Ufs 577/10882(T), Norrköping 2015)

\*7.

53, 54  
G/836


Suomi. Perämeri. Kalajoki. Maakalla. Poistettu ODAS-poiju.

Finland. Bottenviken. Kalajoki. Maakalla. ODAS-boj indragen.

Finland. Bay of Bothnia. Kalajoki. Maakalla. ODAS buoy withdrawn.

TM/Ufs/NtM 23/233(T)/2015 kumotaan/utgår/cancelled

**Paikka – Position – Position**

	WGS 84	
	64°18.41'N	23°32.11'E

(Ilmatieteen laitos/Meteorologiska institutet/Finnish Meteorological Institute, Helsinki/Helsingfors 2015)

## VI Sisävesistöt – Inlandsfarvattnen – Inland Waterways

\*8.

431


Suomi. Vuoksen vesistö. Kuopio. Maaninka. Uusi viitta. Karttamerkinä.

Finland. Vuoksens vattendrag. Kuopio. Maaninka. Ny prick. Kartmarkering.

Finland. Vuoksi watercourse. Kuopio. Maaninka. New spar buoy. Insert in chart.

Uusi viitta – Ny prick – New spar buoy

Lisää – Inför – Insert:

No			WGS 84	
71485		Oikea-SB-Starboard	63°07.740'N	27°18.343'E

(FTA, Lappeenranta/Villmanstrand 2015)