

SISÄLTÖ - INNEHÅLL – CONTENTS

Koskee seuraavia merikarttoja - Berörda sjökort – Affected charts

Kartta	Tiedonanto	Sivu	Edeltävä tiedonanto
Kort	Notis	Sida	Föregående notis
Chart	Notice	Page	Previous update
16 (INT 1248)	74	3	4/50/2013
17 (INT 1249)	74	3	5/66/2013
43 (INT 1134)	75	8	25/266/2012
57 (INT 1148)	76	9	5/70(P)/2013
58 (INT 1149)	76	9	New Edition 10.12.2011
103_C	74	3	New Chart 20.8.2012
958 (INT 1209)	76	9	5/69(P)/2013
A/621	74	3	5/66/2013
A/622	74	3	5/66/2013
A/623	74	3	3/32(T)/2013
A/624	74	3	New Edition 20.1.2013
E/809	75	8	25/266/2012
G/847	76	9	34/378/2012
G/850	76	9	1/7/2012
J/331	78	12	New Edition 10.5.2004
L/216	77	11	26/278/2012
L/217	77	11	New Edition 31.5.2012

Tiedotuksia – Tillkännagivanden – Announcements

Tiedonanto-Notis-Notice	Sivu-Sida-Page	
Breaks in the VTS.	79 (T)	13
Notice 5/67/2013. Correction.	80	13
ENC Cells.	81	15

I Suomenlahti – Finska viken – Gulf of Finland

*74.

16, 17, 103_C
A/621/622/623/624

Suomi. Viro. Voimakaapeli (Estlink 2.). Aseri, Viro – Porvoo, Suomi.

Finland. Estland. Kraftkabel (Estlink 2) mellan Aseri, Estland och Borgå, Finland.

Finland. Estonia. Power cable (Estlink 2) between Aseri, Estonia and Porvoo, Finland.

Ref: TM/Ufs/NtM 31/333(P)/2012, 30/323(T)/2012

Yleiskarttojen 951 ja 952 osalta kaapelin asennuskoordinaatit tiedotetaan kesällä 2013 Suomenlahden avomeriosuudella mahdollisesti tehtävien töiden jälkeen.

Vad gäller översiktskorten 951 och 952, meddelas kabelns nedläggningskoordinater sommaren 2013 efter att eventuella arbeten på avsnittet på öppet hav i Finska viken har slutförts.

Regarding general charts 951 and 952, the alignment coordinates of the cable will be reported in summer 2013 upon completion of any possible operations on the open-sea section in the Gulf of Finland.

Estlink 2.

Asennuskoordinaatit-Nedläggningskoordinaterna-The alignment coordinates. (16, 17, 103_C, A/621/622/623/624).

1. Kartta-Kort-Chart 16

	WGS 84	
1)	60°01.0100'N	25°43.2312'E
2)	60°01.1138'N	25°42.8100'E

2. Kartta-Kort-Chart 17

	WGS 84	
1)	59°59.60'N	25°50.83'E
2)	59 59.78	25 48.98
3)	59 59.92	25 48.69
4)	59 59.98	25 48.32
5)	60 00.05	25 46.62
6)	60 00.21	25 46.45
7)	60 00.44	25 45.87
8)	60 01.29	25 42.05
9)	60 01.45	25 41.14
10)	60 01.46	25 40.84
11)	60 01.65	25 40.60
12)	60 02.10	25 38.87
13)	60 02.22	25 38.32
14)	60 02.67	25 36.94
15)	60 02.82	25 36.78
16)	60 03.01	25 36.91
17)	60 03.11	25 36.88
18)	60 03.24	25 36.54
19)	60 03.62	25 34.76
20)	60 03.73	25 34.44
21)	60 03.82	25 33.95
22)	60 03.90	25 33.77
23)	60 05.00	25 32.69
24)	60 05.18	25 32.37
25)	60 05.65	25 31.99
26)	60 05.77	25 31.96
27)	60 05.95	25 31.59
28)	60 06.32	25 31.33
29)	60 06.91	25 31.22
30)	60 08.08	25 29.98
31)	60 08.43	25 29.37

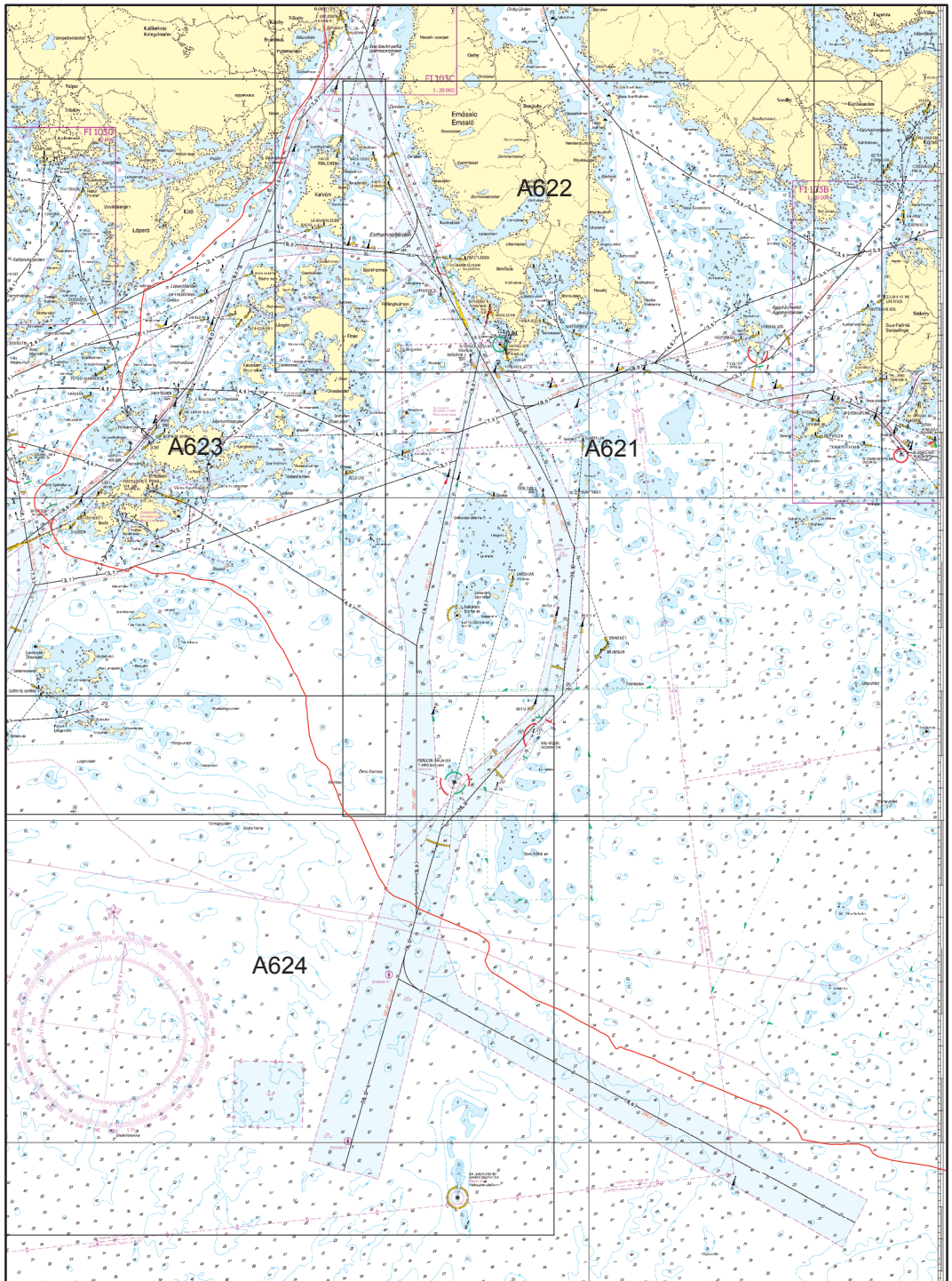
32)	60 08.69	25 28.43
33)	60 08.83	25 27.07
34)	60 08.82	25 26.44
35)	60 08.93	25 25.93
36)	60 08.85	25 25.64
37)	60 09.15	25 23.71
38)	60 09.45	25 23.34
39)	60 09.59	25 23.30
40)	60 09.84	25 22.81
41)	60 09.97	25 22.79
42)	60 10.10	25 22.90
43)	60 10.35	25 23.43
44)	60 10.76	25 23.98
45)	60 11.01	25 24.27
46)	60 11.45	25 25.20
47)	60 11.61	25 25.39
48)	60 11.71	25 25.47
49)	60 12.02	25 25.60
50)	60 12.26	25 25.90
51)	60 12.58	25 26.09
52)	60 12.84	25 26.09
53)	60 13.20	25 26.20
54)	60 13.32	25 26.75
55)	60 13.37	25 27.06
56)	60 13.51	25 27.31
57)	60 13.63	25 27.70
58)	60 13.99	25 28.42
59)	60 14.32	25 29.20
60)	60 14.39	25 29.28
61)	60 14.49	25 29.32
62)	60 14.66	25 29.61
63)	60 14.83	25 30.11
64)	60 14.90	25 30.23

65)	60 15.79	25 30.76
66)	60 15.97	25 30.97
67)	60 16.20	25 31.32
68)	60 16.46	25 31.59
69)	60 16.76	25 31.85
70)	60 16.79	25 31.89
71)	60 17.03	25 31.86
72)	60 17.26	25 31.78

Asennuskoordinaattien linjaus ei merkittävästi eroa tiedonannossa TM 31/333(P)/2012 esitetyistä suunnitelmakoordinaateista.

Nedläggningskoordinaterna för dragningen skiljer sig inte märkbart från plankoordinaterna som angetts i notisen UfS 31/333(P)/2012.

The alignment coordinates do not differ significantly from the plan coordinates given in notice NtM 31/333(P)/2012



III Pohjanlahti – Bottniska viken – Gulf of Bothnia

*75.

43
E/809



Suomi. Selkämeri. Merikarvia. Luvia–Merikarvia-rannikkoväylä (3.4 m). Poistetut linjamerkit. Karttamerkinnän muutos.

Finland. Bottenhavet. Sastmola. Kustleden Luvia–Sastmola (3.4 m). Indragna ensmärken. Ändrad kartmarkering.

Finland. Sea of Bothnia. Merikarvia. Coastal fairway Luvia–Merikarvia (3.4 m). Withdrawn leading beacons. Amend chart.

Ref: TM/UfS/NtM 25/266/2012

Poista linjamerkit – Stryk ensmärkena – Delete leading beacons:

	Nr	Nimi/Namn/Name		WGS 84
1)	24603	Leipäkari al, nedre, front		61°48.7750'N
				21°24.8129'E
2)	24604	Leipäkari yl, övre, rear		61 49.4592
				21 25.5307

(FTA, Turku/Åbo 2013)

*76.

57, 58, 958
G/847/850

Suomi. Perämeri. Ii. Isoniemi–Ii -väylä (2.1 m). Väylälinjauksen muutos. Kulkusyvyyden muutos. Turvalaitemuutokset. Karttamerkinän muutos.

Finland. Bottenviken. Ijo. Farleden Isoniemi–Ijo (2.1 m). Ändrad farledsdragning. Ändrat leddjupgående. Ändrad utprickning. Ändrad kartmarkering.

Finland. Bay of Bothnia. Ii. Isoniemi–Ii channel (2.1 m). Amended channel alignment. Amended maximum authorised draught. Amended channel marking. Amend chart.

A. Väylälinjauksen muutos - Ändrad farledsdragning - Amended channel alignment

Väylän keskilinja – Farledens mittlinje – Fairway centre line

	WGS 84	
1)	65°19.4635' N	25°14.0687'E
2)	65°20.8763'N	25°11.7562'E



Poista vanha keskilinja - Stryk den befintliga mittlinjen - Delete existing centre line.

B. Väylän kulkusyvyys on madallettu 2.4 metristä 2.1 metriin seuraavien pisteiden välillä - Leddjupgåendet i farleden reducerat från 2.4 m till 2.1 m mellan följande punkter - Max. authorised draught in channel reduced from 2.4 m to 2.1 m between the following positions:

	WGS 84	
1)	65°15.8445'N	25°15.0904'E
2)	65°20.8763'N	25°11.7562'E



C. Poistetut linjamerkit – Indragna ensmärken – Withdrawn leading beacons.

Poista – Stryk – Delete:

	Nr		Nimi/Namn/Name	WGS 84	
1)	8924		Tupakkiperä	65°19.0940'N	25°14.6686'E
	(C4112.8)		al, nedre, front		
2)	8925		Tupakkiperä	65°19.0394'N	25°14.7559'E
	(C4112.81)		yl, övre, rear		


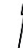

D. Uudet valaisemattomat viitat – Nya obelysta prickar – New unlighted spar buoys.

Lisää – Inför – Insert:

	Nr			WGS 84	
1)	75740		Oikea-SB-Starb.	65°19.9441'N	25°13.2995'E
2)	75741		Oikea-SB-Starb.	65°20.4123'N	25°12.5701'E

E. Siirretyt valaisemattomat viitat – Flyttade obelysta prickar – Unlighted spar buoys moved

Siirrä – Flytta – Move:

	Nr			WGS 84	
1)	10281		Oikea	Paikasta/Från/From	Paikkaan/Till/To
			SB	65°19.1133'N	65°19.0894'N
			Starb.	25°14.3312'E	25°14.1850'E
2)	10284		Vasen	65°19.7326'N	65°19.5599'N
			BB	25°13.5421'E	25°13.8908'E
			Port		
3)	10285		Vasen	65°20.3333'N	65°20.3935'N
			BB	25°12.6009'E	25°12.5048'E
			Port		

VI Sisävesistöt – Inlandsfarvattnen – Inland Waterways

*77.(T)

L/216/216_1/217

Suomi. Vuoksen vesistö. Sulkava. Säviönsaari. Puumala–Savonlinna väylä (4.2 m). Syvyyystietojen muutokset. Karttamerkinän muutos.

Finland. Vuoksens vattendrag. Sulkava. Säviönsaari. Farleden Puumala–Nyslott (4.2 m). Ändrad djupinformation. Ändrad kartmarkering.

Finland. Vuoksi watercourse. Sulkava. Säviönsaari. Puumala–Savonlinna channel (4.2 m). Amended depth information. Amend chart.

Ajankohta: Toistaiseksi

Tidpunkt: Tills vidare

Time: Until further notice

Syvyystietojen muutokset – Ändrad djupinformation – Amended depth information

1)	Poista	4_g	WGS 84	
	Stryk		61°44.332'N	28°30.104'E
	Delete			
2)	Lisää	4 ₆	61 44.3315	28 30.0981
	Inför			
	Insert			

(FTA, Lappeenranta/Villmanstrand 2013)

*78.

J/331

Suomi. Kymijoen vesistö. Päijänne. Kuhmoinen. Kalliosalmi. Ilmajohdon korkeus. Karttamerkintä.

Finland. Kymmene älvs vattendrag. Päijänne. Kuhmoinen. Kalliosalmi. Höjden på luftledningen. Kartmarkering.

Finland. Kymijoki watercourse. Päijänne. Kuhmoinen. Kalliosalmi. Height of overhead cable. Insert in chart.

Lisää ilmajohdon alituskorkeus – Inför höjden på luftledningen – Insert the height of the overhead cable

		WGS 84	
Lisää		61°31.125'N	25°12.366'E
Inför	14		
Insert			

(FTA, Lappeenranta/Villmanstrand 2013)

VIII Tiedotuksia – Tillkännagivanden – Announcements

***79.(T)**

Suomi. Katkoksia Suomen VTS- ja rannikoradiopalveluissa.

Finland. Avbrott i Finlands VTS-service och kustradiotjänst.

Finland. Breaks in the VTS and coastal radio services.

Ajankohta: Viikoilla 9-11

Tidpunkt: Veckorna 9-11

Time: Weeks 9-11

Suomen merialueiden VTS- ja rannikoradiopalveluissa saattaa esiintyä katkoksia viikoilla 9-11, johtuen järjestelmiin tehtävistä muutoksista.

Det kan förekomma avbrott i VTS-servicen och kustradiotjänsten för de finska sjödistrikten under veckorna 9-11 pga. ändringar i systemen.

There may be breaks in the VTS and coastal radio services for the Finnish sea areas during the weeks 9-11, due to system changes.

(FTA, Helsinki/Helsingfors 2013)

***80.**

Suomi. Saaristomeri. Houtskari–Korppoo lauttaväylä (5.0 m). Houtskari–Korppoo lauttojen varaväylä (3.5 m). Poistetut väylänosat. Väylälinjauksen muutos. Uudet väylänosat. Kulkusyvyyyden muutos. Turvalaitemuutokset. Karttamerkinnän muutos. Korjaus.

Finland. Skärgårdshavet. Färjeleden Houtskär–Korpo (5.0 m). Houtskär–Korpo reservfärjeled (3.5 m). Indragna farledsavsnitt. Ändrad farledsdragning. Nya farledsavsnitt. Ändrat leddjupgående. Ändrad utprickning. Ändrad kartmarkering. Rättelse

Finland. Archipelago Sea. Houtskär–Korpo ferry channel (5.0 m). Houtskär–Korpo alternative ferry channel (3.5 m). Discontinued channel sections. Amended channel alignment. New channel sections. Amended maximum authorised draught. Amended buoyage. Amend chart. Correction.

Ref: TM/UfS/NtM 5/67/2013

Tiedonannon 5/67/2013 kohdissa I.1. 1), 2) (N ja E) ja III. 4. 1) (E) oli virhe. Alla kyseiset kohdat korjattuna:

I notis 5/67/2013 angavs punkterna I.1. 1), 2)(N och E) och III. 4. 1) (E) inkorrekt. Rättelse nedan.

In the notice 5/67/2013, items I.1. 1), 2 (N and E) and III. 4. 1) (E) were stated incorrectly. Correction below.

I. Poistetut väylänosat - Indragna farledsavsnitt - Discontinued channel sections

1. Poista – Stryk – Delete

Väylän keskilinja – Farledens mittlinje – Fairway centre line

	WGS 84		(4.5 m)
1)	60°12.1973'N	21°34.0801'E	Alku/begynnelsep./starting point
2)	60°12.7249'N	21°33.0564'E	Loppu/ändpunkt/end point

III. Väylälinjauksen muutokset – Ändrad farledsdragning – Amended channel alignment

4. Lisää – Inför – Insert

Väylän keskilinja – Farledens mittlinje – Fairway centre line

	WGS 84		(4.6 m)
1)	60°12.3179'N	21°31.5012'E	Alku/begynnelsep./starting point

(FTA, Turku/Åbo 2013)

*81.

ENC-solut – ENC-celler – ENC Cells

Uusi editio ENC-solusta – Ny edition av ENC-cell – New edition of ENC Cell

ENC-solu ENC-cell ENC-Cell	Solun nimi Cellnamn Cell name	Editio Edition Edition	Myyntipäivä Utgivningsdatum Release date
FI4EIX6A	Utgrynnan	3	18.2.2013
FI4EIX6C	Valassaaret	2	18.2.2013

(FTA, Helsinki/Helsingfors 2013)

Voimassa olevat ennakkotiedonannot (P)- ja tilapäiset tiedonannot (T) 28.02.2013

Preliminära (P) och Tillfälliga (T) notiser 28.02.2013

Current Preliminary (P) and temporary (T) notices 28.02.2013

TM - UFS - NtM	Ajankohta Tidpunkt Time	Merikart Sjökort Chart	Asia - Rubrik - Subject
Suomenlahti - Finska viken - Gulf of Finland			
5/65(T)/2013	Until further notice	952	Estonia. S of Prangli. Anchorage area K. Obstruction. Anchorage prohibited.
3/32(T)/2013	Until further notice	17	Southern Finland's winter navigation route (9.0 m). Speed limit. Meeting and overtaking prohibited.
3/30(P)/2013	By 31 May 2013	19	Kirkkonummi. Kantvik. New light character of leading beacons.
1/1(T)/2013	Until further notice	17, 18	Off Helsinki. ODAS buoy withdrawn for the winter season.
35-36/385(T)/2012	1.1.2013 – 31.3.2013	17	Sipoo. Channels closed for the winter season. Tallörn channel (6.1 m) and Onas channel (4.5 m).
35-36/382(T)/2012	Until further notice	952	Estonia. Bay of Tallinn. Anchorage area H. Anchorage prohibited.
33/360(T)/2012	Until further notice	951	Russia. Vyotsk/Vipuri channel. Light Rondo extinguished.
33/359(T)/2012	Until further notice	951	Russia. Gogland. Lighthouse Južnyj Goglandskij. Amended range.
31/333(P)/2012	Until spring 2013	951, 952	Finland. Estonia. Power cable (Estlink 2.) to be established between Aseri, Estonia and Porvoo, Finland.
24/490(T)/2011	Until further notice	951	Russia. Moščnyj. The light character of Lighthouse Moščnyj temporarily changed.

Saaristomeri - Skärgårdshavet - Archipelago Sea				
3/37(T)/2013	Until about 14 April 2013	25,26, 28, 29	Archipelago Sea. Channels closed for the winter season	
3/35(T)/2013	Until about 26 April 2013	22,23, 25,26	Archipelago Sea. Channels closed for the winter season	
3/34(T)/2013	Until about 14 April 2013	22,23, 28,29	Archipelago Sea. Channels closed for the winter season	
19-20/209(T)/2012	Until 31.12.2012	27	Utö. ODAS-buoy established.	
9/91(T)/2012	Until the end of 2013	34	Åland. Off Hammarudda. Temporary lightbuoy laid.	
Pohjanlahti - Bothniska viken - Gulf of Bothnia				
5/70(P)/2013	By 30 June 2013	57	Bay of Bothnia. Oulu. Amended channel alignment. Amended buoyage. Withdrawn anchorage area. Amended depth inform.	
5/69(P)/2013	By 15 June 2013	48	Sea of Bothnia. Appr. to Vasa. Amended maximum authorised draught. Withdrawn channel section. Spar buoy moved.	
5/68(T)/2013	Until spring 2013	5, 953	Sweden. Sea of Bothnia. Sea of Åland. Deep water route. Lightbuoys temporarily withdrawn for the winter season.	
3/39(T)/2013	Until spring 2013	5, 47, 957	Sweden. The Quark. DW route. Buoys and spar buoy temporarily withdrawn for the winter.	
3/38(T)/2013	Until spring 2013	5	Sea of Bothnia. ODAS-buoy withdrawn.	
2/23(T)/2013	Until further notice	51, 52	Bay of Bothnia. NW of Kokkola. Stockö channel (2.7 m) Amended maximum authorised draught. Notice repeated.	
2/22(T)/2013	Until further notice	48	Sea of Bothnia. Off Vaasa. Nagelprick-Hästgrund channel (3.4 m). Shoal. Spar buoy. Notice repeated.	
1/12(T)/2013	1.1.- 31.5.2013	42	Sea of Bothnia. Pori - Reposaari (1.5 m). The opening of Reposaari bascule bridge traffic interrupted.	
35-36/390(T)/2012	Until about 1 June 2013	48	The Quark. Replot. Korsö channel (4.5 m). Lighted spar buoys unlit during the winter season.	
35-36/388(T)/2012	Until about 1 June 2013	45	Sea of Bothnia. Malax. Spar buoy withdrawn for the winter season.	
33/362(T)/2012	Until further notice	958	Bay of Bothnia. ODAS buoy withdrawn for the winter season.	
32/352(P)/2012	Until further notice	59	Bay of Bothnia. Kemi-Tornio channel (2.4 m). Shoals.	

32/349(P)/2012	Until 1 June 2013	47,48, 49,50	Sea of Bothnia. The Quark. DW 16.2 m. Vaasa channel (9.0 m). Buoyage withdrawn for the winter season
32/348(P)/2012	Autumn 2012/Spring 2013	29, 40, 41	Amended channel alignment. Amended buoyage. Amended depth information. Postponed introduction of changes.
31/339(P)/2012	From 1 May 2013, 0000 UTC	957	Finland, Sweden. Sea of Bothnia. The Quark. New Traffic Separation Scheme, TSS IN NORRA KVARKEN.
Itämeri - Östersjön - Baltic Sea			
3/43(T)/2013	Until further notice	953	Estonia. Northern Baltic. Kolga Kuiv Shoal. Temporarily withdrawn light buoy.
27/290(T)/2012	Until further notice	935, 953	Northern Baltic. Light and racon of lighted mark Suomen Leijona are temporarily inoperative. Warning.
27/544(T)/2011	- Spring 2013		Sweden. Central Baltic. The SAMBAH Project. Equipment on the seabed. Buoys.
Sisävedet - Inlandsfarvattnen - Inland waterways			
6/77(T)/2013	Until further notice	L	Vuoksi watercourse. Puumala-Savonlinna channel (4.2 m). Amended depth information.
4/59(T)/2013	Until further notice	M	Vuoksi watercourse. Haukivesi. Tappuvirta channel (4.2 m). Shoal. Notice repeated.
24/256(T)/2012	Until further notice	L	Vuoksi watercourse. Joutseno. Pulp channel (4.2m). Amended depth information.
22-23/240(T)/2012	Until further notice	M, V	Vuoksi watercourse. Oravi. Haponlahti-Linnasaari channel (4.2 m). Damaged leading beacon. Warning.
18/196(T)/2012	Until further notice	L	Pulp channel (4.2m). Amended depth information.
12/233(T)/2011	Until further notice	K	Sorvasalo-Niinilahti channel (1.8 m). Obstruction.
25/405(T)/2010	Until further notice	K	Channel in Keitele Canal (2.4 m). Shoals.
12/174(T)/2010	Until further notice	K	Keitele. Äämeinen- Harinkaa channel (1.8 m). Amended depth information.
32/598(T)/2009	Until further notice	R	Pielisjoki channel (2.4 m). Shoal. Depth observation.
28/528(T)/2009	Until further notice	K	Keitele. Kuljonlahti chn.(1.8 m). Underwater rock.

Tiedotuksia - Tillkännagivanden - Announcements	
6/79(T)/2013	Weeks 9-11 Breaks in the VTS and coastal radio services.
4/63(T)/2013	Until spring 2013 S Saimaa Canal closed for the winter season.
35-36/396(T)/2012	Until further notice Coastal waters and inland waterways. The impact of winter on aids to navigation. Warning.
35-36/394(T)/2012	Until further notice Bay of Bothnia. Traffic restrictions.
33/365(T)/2012	Until spring 2013 952, 951 Finland. Estonia. Gulf of Finland. Power cable (Estlink 2.) to be established between Aseri, Estonia and Porvoo, Finland.
24/258(T)/2012	Until about 31 August 2013 957, 958 Bay of Bothnia. Ulkokalla–Oulun Portti. Hydrographic surveying in progress. Warning.
19-20/216(T)/2012	Until about 30 August 2013 957, 958 Bay of Bothnia. Quark–Tornio. Hydrographic surveying in progress. Warning.
11-12/116(T)/2012	Until further notice ODAS buoys (Occas.)

(FTA, Helsinki/Helsingfors 2013)
