

SISÄLTÖ - INNEHÅLL - CONTENTSKoskee seuraavia merikarttoja - Berörda sjökort - **Affected charts**

Kartta	Tiedonanto	Sivu	Edeltävä tiedonanto
Kort	Notis	Sida	Föregående notis
Chart	Notice	Page	Previous update
13 (INT 1245)	184	6	13/137/2014
14 (INT 1246)	184	6	15/157/2014
17 (INT 1249)	182(T)	5	15/156/2014
18 (INT 1250)	182(T)	5	16/167/2014
20 (INT 1252)	181	3	3/27/2014
24 (INT 1187)	186	12	5/54/2014
31 (INT 1194)	185(T)	10	10/102/2014
32 (INT 1195)	185(T)	10	16/170/2014
40 (INT 1131)	187(T)	13	10/107(T)/2014
45 (INT 1136)	188	15	15/158/2014
46 (INT 1137)	188	15	33/390/2013
46 (INT 1137)	189	23	17/188/2014
46 (INT 1137)	190	28	17/189/2014
48 (INT 1139)	190	28	16/173/2014
54 (INT 1145)	191	32	13/142(T)/2014
55 (INT 1146)	191	32	34/407/2013
56 (INT 1147)	191	32	New Edition 10.12.2011
115.B	190	28	2/18/2014
160 (INT 1156)	185(T)	10	13/138/2014
162 (INT 1157)	185(T)	10	10/101/2014
192 (INT 1160)	182(T)	5	15/155/2014
951	183	6	15/164(T)/2014
951	184	6	17/183/2014
952	182(T)	5	15/164(T)/2014
952	183	6	17/182(T)/2014
958 (INT 1209)	191	32	16/174/2014

A/600.B	184	6	New Edition 20.1.2013
A/604	184	6	12/126/2014
A/605	184	6	13/137/2014
A/606	184	6	12/125/2014
A/608	184	6	15/157/2014
A/625	182(T)	5	15/155/2014
B/625	182(T)	5	15/155/2014
B/633	181	3	28/294/2012
B/635	181	3	31/367/2013
B/647	186	12	10/105/2014
C/735	187(T)	13	10/107(T)/2014
C/753	185(T)	10	10/101/2014
C/754	185(T)	10	10/102/2014
C/755	185(T)	10	32/384/2013
C/756	185(T)	10	13/138/2014
D/701	186	12	10/105/2014
D/734	187(T)	13	New Edition 28.2.2014
D/735	187(T)	13	10/107(T)/2014
E/800	187(T)	13	New Edition 31.3.2014
E/801	187(T)	13	New Edition 31.3.2014
E/802	187(T)	13	New Edition 31.3.2014
F/814	188	15	15/158/2014
F/816	188	15	33/390/2013
F/816	189	23	17/188/2014
F/816	190	28	17/189/2014
F/817	190	28	13/140(T)/2014
F/818	190	28	31/373/2013
F/819	190	28	33/391/2013
F/820	190	28	33/391/2013
G/838	191	32	34/407/2013

I Suomenlahti – Finska viken – Gulf of Finland

*181.





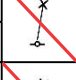
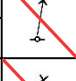

20
B/633/635

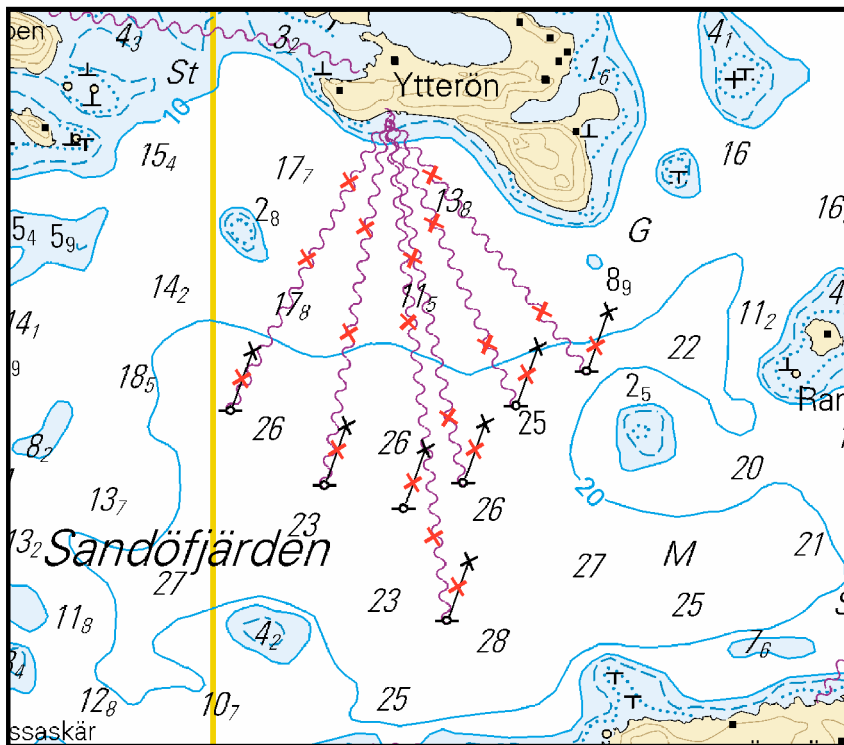
Suomi. Raasepori. Sandöfjärden. Poistetut erikoismerkit. Karttamerkinnän muutos.

Finland. Raseborg. Sandöfjärden. Indragna specialmärken. Amend chart.

Finland. Raseborg. Sandöfjärden. Discontinued special marks. Amend chart.

Poista – Stryk – Delete:

	Nr		WGS 84	
1)	74263		59°53.84'N	23°37.32'E
2)	74264		59 53.78	23 37.07
3)	74265		59 53.64	23 36.89
4)	74266		59 53.40	23 36.83
5)	74267		59 53.64	23 36.41
6)	74268		59 53.77	23 36.08
7)	74375		59 53.60	23 36.68



Maihin vedetyt kaapelit on poistettu.

Kablarna som dragits till land har avlägsnats.

The cables laid to shore have been discontinued.

(FTA, Helsinki/Helsingfors 2014)

*182.(T)

17, 18, 192, 952
A,B/625

Suomi. Vuosaaren satama. Vuosaaren väylä (11.0 m). Nopeusrajoitus.

Finland. Nordsjö hamn. Nordsjöleden (11.0 m). Fartbegränsning.

Finland. Port of Vuosaari. Vuosaari channel (11.0 m). Speed limit.

Ajankohta: Toistaiseksi

Tidpunkt: Tills vidare

Time: Until further notice

Liikennevirasto asettaa alusliikenteelle 5 solmun nopeusrajoituksen Vuosaaren satamaan ja Vuosaaren väylälle ohitettaessa pohjatutkimuksia suorittavaa lautta. Rajoitus on voimassa 0.5 M etäisyydelle lautasta ja ainoastaan lautan työskennellessä väylällä.

Trafikverket utfärdar en 5 knops fartbegränsning för fartyg som passerar plattformen som utför bottenundersökningar i Nordsjö hamn och i Nordsjöleden. Begränsningen gäller på ett 0,5 M avstånd från plattformen och endast då den är i bruk i farleden.

The Finnish Transport Agency imposes a 5 knot speed limit for vessels passing the platform performing seabed surveys in Vuosaari Harbour and Vuosaari Channel. The speed limit is in force at a 0.5 M distance from the platform and only when the platform is operating in the channel.

Nopeusrajoitus 9 km/h (5 solmua) seuraavien pisteiden välillä (lautan työskennellessä väylällä):

Fartbegränsning 9 km/h (5 knop) mellan följande punkter (då plattformen är i bruk i farleden):

Speed limit 9 km/h (5 knots) between the following positions (when the platform is operating in the channel):

	WGS 84		
1)	60°09.0'N	25°12.5'E	Östra Rödhällen
2)	60°13.0'N	25°11.5'E	Port of Vuosaari

(FTA, Helsinki/Helsingfors 2014)

183.


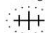
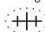

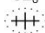
951, 952

Viro. Kunda P -puoli. Hylt. Karttamerkintä.

Estland. N om Kunda. Vrak. Kartmarkering.

Estonia. N of Kunda. Wrecks. Insert in chart.

Lisää hylt- Inför vrak – Insert wrecks:

1)	76	WGS 84	
		59°44.18'N	26°16.62'E
2)	73 _g		
		59 46.90	26 18.42
3)	59 _g		
		59 49.11	26 03.32
4)	62 ₇		
		59 49.45	25 53.14
5)	58 ₄		
		59 52.91	26 19.87
6)	62 ₆		
		59 53.33	26 16.28

(NtM 6/81, Tallinn 2014)

*184.

13, 14, 951

A/600.B /604/605/605.2/606/608

Suomi. Kotka. Hamina. Virolahti. Rajavyöhyke. Erikoismerkit. Karttamerkinnän muutos.

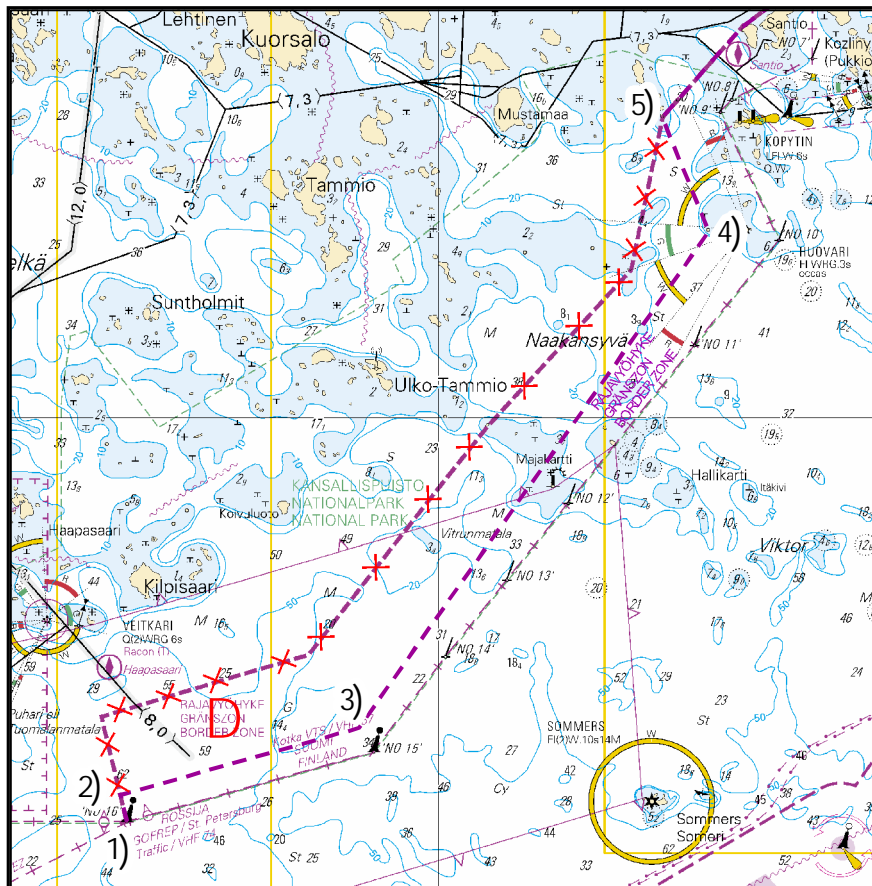
Finland. Kotka. Fredrikshamn. Vederlax. Gränsson. Specialmärken. Amend chart.

Finland. Kotka. Hamina. Virolahti. Border zone. Special marks. Amend chart.

A. Muuttunut rajavyöhykkeen raja – Gränszonens ändrade gränslinje - Amended border line of border zone





	WGS 84		
1)	60°12.012'N	27°17.594'E	Alku/begynnelsep./starting point
2)	60°12.542'N	27°17.330'E	
3)	60°13.872'N	27°26.846'E	
4)	60°23.677'N	27°40.767'E	
5)	60°25.916'N	27°38.918'E	Loppu/ändpunkt/end point

Poista vanha rajalinja - Stryk den befintliga gränslinjen - Delete existing border line.









B. Poistetut erikoismerkit - Indragna specialmärken - Withdrawn special marks

Poista – Stryk – Delete:

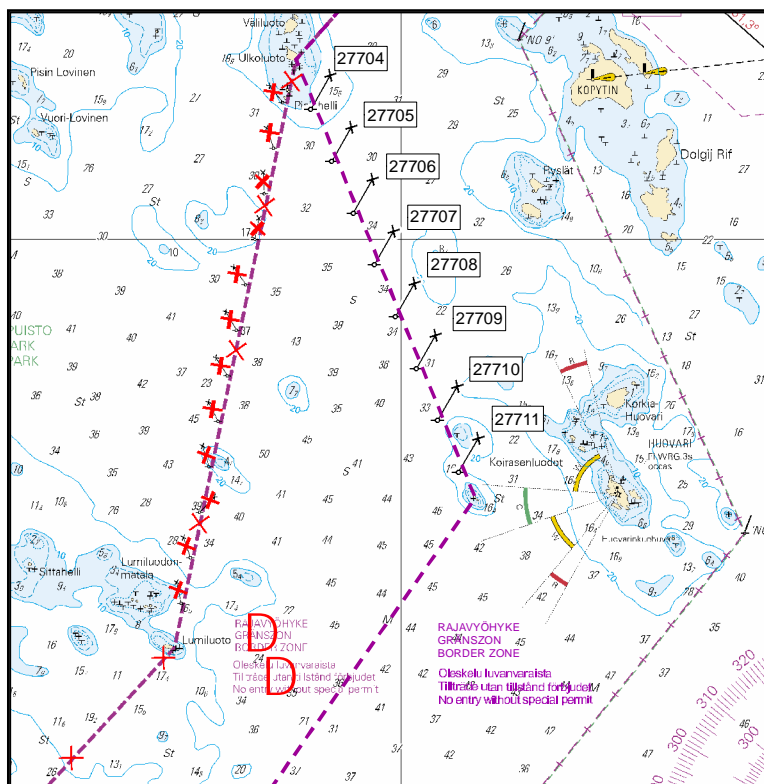
			WGS 84	
1)	27712		60°23.837'N	27°38.014'E
2)	27713		60°23.605'N	27°37.919'E
3)	27714		60°23.372'N	27°37.824'E
4)	27715		60°23.140'N	27°37.728'E

C. Siirretyt erikoismerkit – Flyttade specialmärken – Special marks moved

Siirrä – Flytta – Move:

	Nr		WGS-84	
			Paikasta/Från/From	Paikkaan/Till/To
1)	27704		60°25.694'N	60°25.664'N
			27°38.776'E	27°39.073'E
2)	27705		60°25.462'N	60°25.400'N
			27°38.681'E	27°39.291'E
3)	27706		60°25.230'N	60°25.135'N
			27°38.586'E	27°39.510'E
4)	27707		60°24.998'N	60°24.871'N
			27°38.490'E	27°39.728'E
5)	27708		60°24.766'N	60°24.607'N
			27°38.395'E	27°39.947'E
6)	27709		60°24.533'N	60°24.342'N
			27°38.300'E	27°40.165'E

7)	27710	✕	60°24.301'N	60°24.078'N
			27°38.204'E	27°40.383'E
8)	27711	✕	60°24.069'N	60°23.814'N
			27°38.109'E	27°40.602'E



Muutokset huomioidaan merikarttojen 13 ja 14 tulevissa painoksissa. Kartat julkaistaan heinäkuussa 2014.

Ändringarna har införts i de kommande upplagorna av sjökorten 13 och 14. Sjö-korten publiceras i juli 2014.

The amendments will be included in the upcoming editions of charts 13 and 14. The charts will be published in July 2014.

(FTA, Helsinki/Helsingfors 2014)

II Saaristomeri ja Ahvenanmeri

Skärgårdshavet och Ålands hav

Archipelago Sea and Sea of Åland

*185.(T)

31, 32, 32.A, 160, 162

C/753/753.1/754/754.1/755/756/756.1/756.2

Suomi. Ahvenanmeri. Ahvenanmaa. Resningarna–Granö klubb -väylä (7.3 m). Rödhamn–Orrskär–Svinö -väylä (7.3 m). Ledskärin rinnakkaisväylä (7.0 m). Nyhamn–Rödsjär -väylä (8.2 m). Trutkobb–Kalkskär -väylä (4.5 m). Turvalaitteiden huoltotyöt.

Finland. Ålands hav. Åland. Farleden Resningarna–Granö klubb (7.3 m). Farleden Rödhamn–Orrskär–Svinö (7.3 m). Den parallella farleden till Ledskär (7.0 m). Farleden Nyhamn–Rödsjär (8.2 m). Farleden Trutkobb–Kalkskär (4.5 m). Underhåll av säkerhetsanordningar.

Finland. Sea of Åland. Åland. Resningarna–Granö klubb channel (7.3 m). Rödhamn–Orrskär–Svinö channel (7.3 m). The parallel channel to Ledskär (7.0 m). Nyhamn–Rödsjär channel (8.2 m). Trutkobb–Kalkskär channel (4.5 m). Maintenance of aids to navigation.

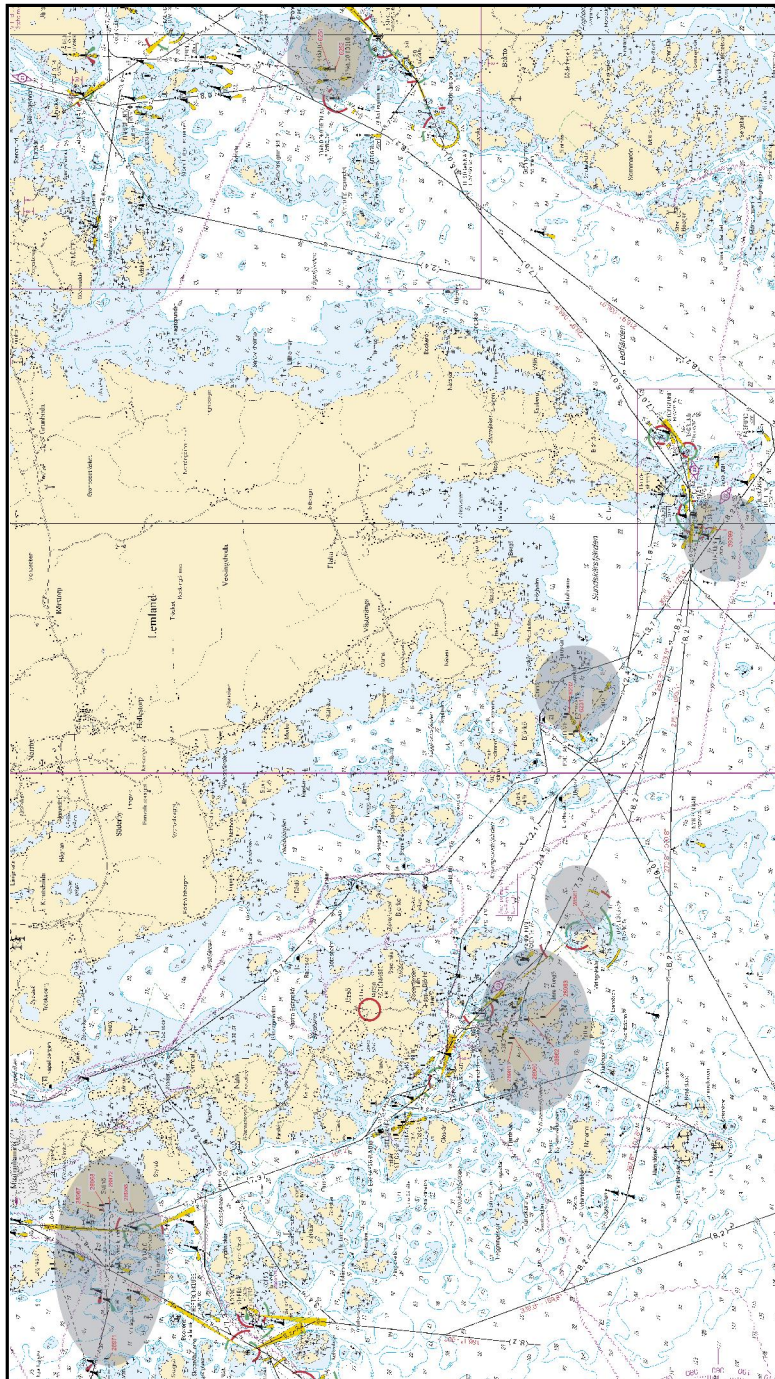
Ajankohta: syksyyn 2014
Tidpunkt: till hösten 2014
Time: until autumn 2014

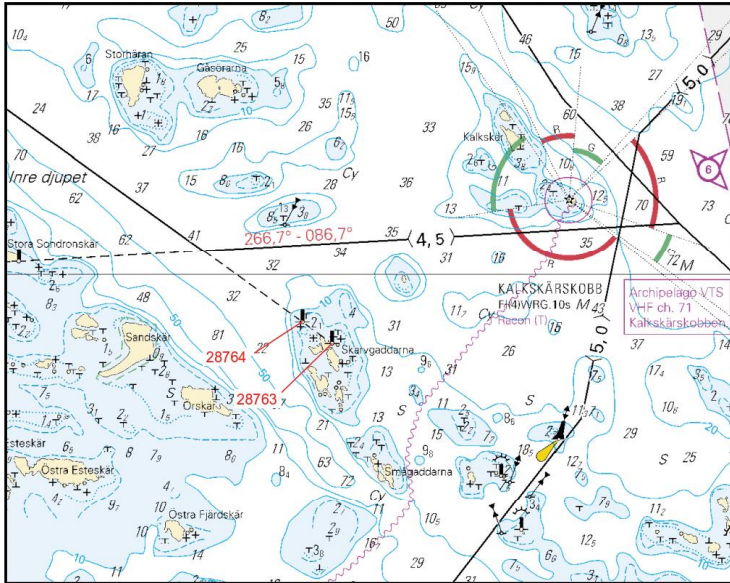
Liikennevirasto teettää merenkulun turvalaitteiden muutos- ja korjaustöitä Ahvenanmerellä kesällä 2014. Huoltotyöt voivat aiheuttaa turvalaitteiden tilapäistä toimimattomuutta.

Trafikverket låter utföra ändringar och reparationer av säkerhetsanordningar för sjöfarten i Ålands hav sommaren 2014. Underhållsarbetet innebär att säkerhetsanordningar tillfälligt kan vara ur bruk.

The Finnish Transport Agency has commissioned alterations and repairs of aids to navigation in the Sea of Åland in summer 2014. Due to this maintenance work, aids to navigation may temporarily be inoperative.

Lisätietoja - Ytterligare information - Further information:
Saariston Merikuljetus Oy, Ab, Ltd/ Markku Tervahartiala
puh. - tfn - phone: +358 440 102428
markku.tervahartiala@gmail.com





(FTA, Turku/Åbo 2014)

*186.

24
B/647
D/701

Suomi. Saaristomeri. Kemiönsaari. Örofjärden. Korjaus.

Finland. Skärgårdshavet. Kimitoön. Örofjärden. Rättelse.

Finland. Archipelago Sea. Kimitoön. Örofjärden. Correction.

Ref: TM/UfS/NtM 16/169/2014

Tiedonannossa TM 16/169/2014 karttatuotteet oli merkitty väärin. Muutokset kohdistuvat tässä tiedonannossa mainituille kartoille.

I notisen UfS 16/169/2014 hade fel sjökortsprodukter angetts. Ändringarna gäller sjökorten som nämns i denna notis.

The chart products referred to in notice NtM 16/169/2014 were incorrect. The amendments concern the charts referred to in this notice.

(FTA, Helsinki/Helsingfors 2014)

III Pohjanlahti – Bottniska viken – Gulf of Bothnia

*187.(T)

40, 40.A

C/735

D/734/735/735.1

E/800/801/802

Suomi. Selkämeri. Uusikaupunki. Uudenkaupungin väylä (10.0 m). Ruoppaus-
työt. Läjitysalueet.

Finland. Bottenhavet. Nystad. Nystads farled (10.0 m). Muddringsarbeten.
Tipplatser.

Finland. Sea of Bothnia. Uusikaupunki. Uusikaupunki channel (10.0 m).
Dredging operations. Spoil grounds.

Ajankohta: avovesikauden 2014 loppuun

Tidpunkt: till slutet av öppet vatten-säsongen 2014

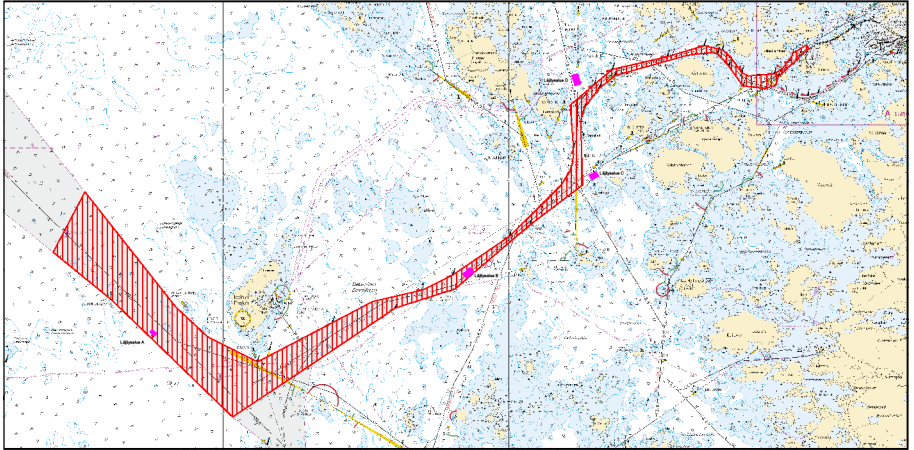
Time: to the end of the open water season 2014

Uudenkaupungin väylällä suoritetaan ruoppaustöitä. Työyksiköt kuuntelevat VHF-
kanavia 16 ja 71.

Muddringsarbete pågår i farleden till Nystad farled. Arbetsenheterna lyssnar på
VHF-kanalerna 16 och 71.

Dredging operations in the Uusikaupunki channel. The work teams monitor VHF
channels 16 and 71.

Ruoppaustyöt - Muddringsarbetet - Dredging operations:



Läjtysalueet – Tipplatser –Spoil grounds:



VAROITUS: Alueella liikkuvien alusten tulee hiljentää nopeutta ja välttää aallokon aiheuttamista työalusten läheisyydessä.

WARNING: Fartyg som rör sig i området ska sakta farten och undvika att orsaka svall i närheten av arbetsfartygen.

WARNING: Vessels navigating in the area are advised to reduce their speed and avoid creating undue wash in the vicinity of the work sites and the work vessels.

(FTA, Turku/Åbo 2014)

*188.

45, 46
F/814/814.2/816/816.1

Suomi. Selkämeri. Korsnäs. Harvungön väylä (1.2 m). Venereitti muutettu väyläksi. Kulkusyvyyden muutos. Väylälinjauksen muutos. Poistettu väylänosa. Turvalaitemuutokset. Karttamerkinän muutos.

Finland. Bottenhavet. Korsnäs. Harvungö farled (1.2 m). Båtrutten ändrad till farled. Ändrat leddjuggående. Ändrad farledsdragning. Indraget farledsavsnitt. Ändrad utprickning. Ändrad kartmarkering.

Finland. Sea of Bothnia. Korsnäs. Harvungö channel (1.2 m). Small craft route upgraded to channel. Amended maximum authorised draught. Amended channel alignment. Withdrawn channel section. Amended buoyage. Amend chart.

A. Uusi väylälinja – Ny farledslinje – New navigation line

Kulkusyvyys 1.2 m – Leddjuggående 1.2 m – Max. authorised draught 1.2 m

Lisää – Inför - Insert: (Kartta - Kort - Chart 45, 46)

	WGS 84		
1)	62°45.427'N	21°04.707'E	Alku/begynnelsep./starting point
2)	62 45.332	21 04.972	
3)	62 43.809	21 06.010	
4)	62 43.000	21 05.733	
5)	62 42.434	21 05.132	Loppu/ändpunkt/end point

B. Väylälinjauksenmuutos - Ändrad farledsdragning - Amended channel alignment

Lisää – Inför – Insert: (Kartta - Kort - Chart F/814/814.2/816)

	WGS 84		
1)	62°43.000'N	21°05.733'E	Alku/begynnelsep./starting point
2)	62°42.434'N	21°05.132'E	Loppu/ändpunkt/end point

Poista vanha keskilinja - Stryk den befintliga mittlinjen - Delete existing centre line (Kartta - Kort - Chart 45,46, F/814/814.2/816)

Poista - Stryk - Delete:

	WGS 84		
1)	62°42.828'N	21°05.572'E	Alku/begynnelsep./starting point
2)	62°42.722'N	21°05.166'E	
3)	62°42.434'N	21°05.132'E	Loppu/ändpunkt/end point

C. Poistettu väylälinja – Indragen farledslinje – Discontinued navigation line

Poista - Stryk - Delete:

	WGS 84		
1)	62°45.332'N	21°04.972'E	Alku/begynnelsep./starting point
2)	62°45.142'E	21°05.502'N	Loppu/ändpunkt/end point

D. Väylänkulkusyvyyden madallettu 1.5 metrillä 1.2 metriin. seuraavien pisteiden välillä - Leddjupgåendet reducerat från 1.5 m till 1.2 m mellan följande punkter - Max. authorized draught reduced from 1.5 m to 1.2 m between the following positions: (Kartta - Kort - Chart F/814/814.2/816/816.1)

	WGS 84		
1)	62°45.427'N	21°04.707'E	Alku/begynnelsep./starting point
2)	62°42.434'N	21°05.132'E	Loppu/ändpunkt/end point

KO -haara – NO-förgrening – NE branch

	WGS 84		
1)	62°45.068'N	21°05.152'E	Alku/begynnelsep./starting point
2)	62°45.291'N	21°06.205'E	Loppu/ändpunkt/end point

E. Venereitti on muutettu väyläksi seuraavien pisteiden välillä – Båtrutten ändrad till farled mellan följande punkter – Small craft route upgraded to channel between the following positions: (Kartta - Kort - Chart F/814/814.2/816/816.1)


	WGS 84		
1)	62°45.427'N	21°04.707'E	Alku/begynnelsep./starting point
2)	62°42.434'N	21°05.132'E	Loppu/ändpunkt/end point

KO -haara – NO-förgrening – NE branch

	WGS 84		
1)	62°45.068'N	21°05.152'E	Alku/begynnelsep./starting point
2)	62°45.291'N	21°06.205'E	Loppu/ändpunkt/end point


F. Turvalaitemuutokset - Ändrad utprickning - Amended buoyage.

I Siirretty valaisematon viitta - Flyttad obelyst prick - Unlighted spar buoy moved:

			Paikasta/Från/From	Paikkaan/Till/To
		Länsi	62°42.657'N	62°42.472'N
		Väst	21°05.184'E	21°05.188'E
56160		West		


II. Poistettu valaisematon viitta - Indragen obelyst prick - Withdrawn unlighted spar buoy (Kartta - Kort - Chart F/814/814.2/816)

Poista - Stryk - Delete:

Nr				
20501		Pohjois	62°42.715'N	21°05.212'E
		Nord		
		North		


III. Uusi valaisematon viitta - Ny obelyst prick - New unlighted spar buoy (Kartta - Kort - Chart F/814/814.2/816)









Lisää - Inför - Insert:









Nr				
20501		Itä	62°42.602'N	21°05.2865'E
		Ost		
		East		

IV. Uudet valaisemattomat viitat - Nya obelysta prickar - New unlighted spar buoys (Kartta - Kort - Chart 45, 46)




Lisää - Inför - Insert:

	Nr			WGS 84	
1)	20517		Itä	62°45.308'N	21 04.964'E
			Ost		
			East		

2)	30195		Itä	62 44.756	21 05.355
			Ost		
			East		
3)	30194		Länsi	62 44.758	21 05.370
			Väst		
			West		
4)	20516		Itä	62 43.803	21 05.982
			Ost		
			East		
5)	20515		Itä	62 43.560	21 05.904
			Ost		
			East		
6)	20514		Itä	62 43.229	21 05.797
			Ost		
			East		
7)	20513		Länsi	62 43.211	21 05.818
			Väst		
			West		
8)	20511		Länsi	62 43.170	21 05.800
			Väst		
			West		
9)	20512		Itä	62 43.151	21 05.778
			Ost		
			East		



10)	20510		Itä	62 43.074	21 05.744
			Ost		
			East		
11)	20509		Länsi	62 43.074	21 05.764
			Väst		
			West		
12)	20508		Länsi	62 43.032	21 05.756
			Väst		
			West		
13)	20505		Itä	62 43.010	21 05.728
			Ost		
			East		
14)	20504		Itä	62 42.914	21 05.632
			Ost		
			East		
15)	20503		Länsi	62 42.889	21 05.624
			Väst		
			West		
16)	20502		Itä	62 42.860	21 05.572
			Ost		
			East		
17)	20501		Itä	62 42.602	21 05.287
			Ost		
			East		

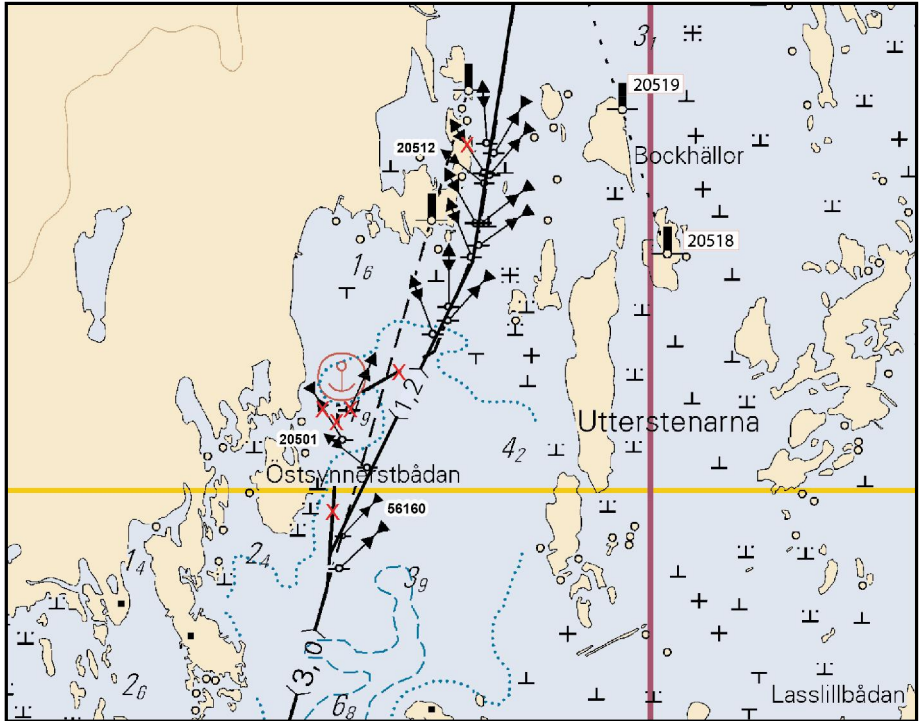
V. Viittojen tarkistettu sijainti – Prickarnas position kontrollerad – Adjusted spar buoy positions: (Kartta - Kort - Chart F/814/814.2/816)

	Nr			WGS 84	
1)	20512		Itä-Ost-East	62°43.151'N	21°05.780'E
2)	20516		Itä-Ost-East	62°43.803'N	21°05.982'E
3)	20517		Itä-Ost-East	62°45.308'N	21°04.964'E

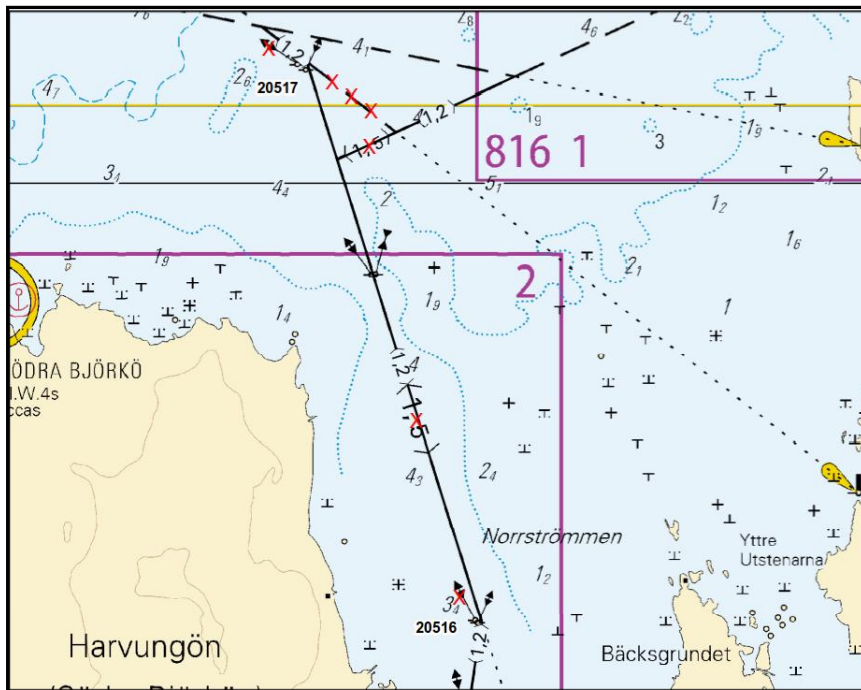
VI. Linjamerkit – Ensmärken – Leading beacons (Kartta - Kort - Chart 45, 46)

Lisää – Inför - Insert:

	Nr		WGS 84	
1)	20519		62°43.017'N	21°06.548'E
2)	20518		62°43.295'N	21°06.359'E



Ei merikartan mittakaavassa - Inte i sjökortets skala - Not to scale of chart



Ei merikartan mittakaavassa - Inte i sjökortets skala - Not to scale of chart

(FTA, Vaasa/Vasa 2014)

*189.

46
F/816/816.2

Suomi. Selkämeri. Korsnäs. Moikipään Mv-aseman väylä (1.8 m). Venereitti muutettu väyläksi. Muuttunut väylälinjaus. Turvalaitemuutokset. Karttamerkinnän muutos.

Finland. Bottenhavet. Korsnäs. Farleden till Molpehällornas sjöbevakningsstation (1.8 m). Båtrutten ändrad till farled. Ändrad farledsdragning. Ändrad utprickning. Ändrad kartmarkering.

Finland. Sea of Bothnia. Korsnäs. Channel to Molpehällorna Coast Guard station (1.8 m). Small craft route upgraded to channel. Amended channel alignment. Amend buoyage. Amend chart.

Ref: TM/UfS/NtM 1/12/2010

A. Uusi väylälinja – Ny farledslinje – New navigation line

Kulkusyvyys 1.8 m – Leddjupgående 1.8 m – Max. authorised draught 1.8 m (Kartta - Kort - Chart 46)

Lisää – Inför - Insert:

	WGS 84		
1)	62°53.874'N	21°06.174'N	Alku/begynnelsep./starting point
2)	62°53.710'N	21°05.933'N	
3)	62°53.566'N	21°05.791'N	
4)	62°53.527'N	21°05.657'N	Loppu/ändpunkt/end point

B. Väylälinjauksen muutokset – Ändrad farledsdragning – Amended channel alignment (Kartta - Kort - Chart F/816/816.2)

Väylän keskilinja – Farledens mittlinje – Fairway centre line

	WGS 84	
1)	62°53.874'N	21°06.174'E
2)	62°53.710'N	21°05.933'E

Poistavanha keskilinja - Stryk den befintliga mittlinjen - Delete existing centre line





C. Venereitti on muutettu väyläksi seuraavien pisteiden välillä – Båtrutten ändrad till farled mellan följande punkter – Small craft route upgraded to channel between the following positions: (Kartta - Kort - Chart F/816/816.2)







	WGS 84	
1)	62°53.874'N	21°06.174'N
4)	62°53.527'N	21°05.657'N

D. Turvalaitemuutokset - Ändrad utprickning - Amend buoyage.

I Uudet valaisemattomat viitat – Nya obelysta prickar – New unlighted spar buoys (Kartta - Kort - Chart 46)





Lisää – Inför - Insert:

	Nr			WGS 84	
1)	30365		Länsi	62°53.706'N	21 05.937'E
			Väst		
			West		
2)	57534		Länsi	62 53.672	21 05.902
			Väst		
			West		
3)	30366		Itä	62 53.675	21 05.892
			Ost		
			East		
4)	30364		Länsi	62 53.628	21 05.859
			Väst		
			West		


5)	30362		Itä	62 53.599	21 05.820
			Ost		
			East		
6)	30363		Länsi	62 53.579	21 05.808
			Väst		
			West		
7)	30361		Pohjois	62 53.563	21 05.790
			Nord		
			North		
8)	30360		Etelä	62 53.566	21 05.784
			Syd		
			South		
9)	30358		Etelä	62 53.538	21 05.688
			Syd		
			South		
10)	30359		Pohjois	62 53.529	21 05.668
			Nord		
			North		

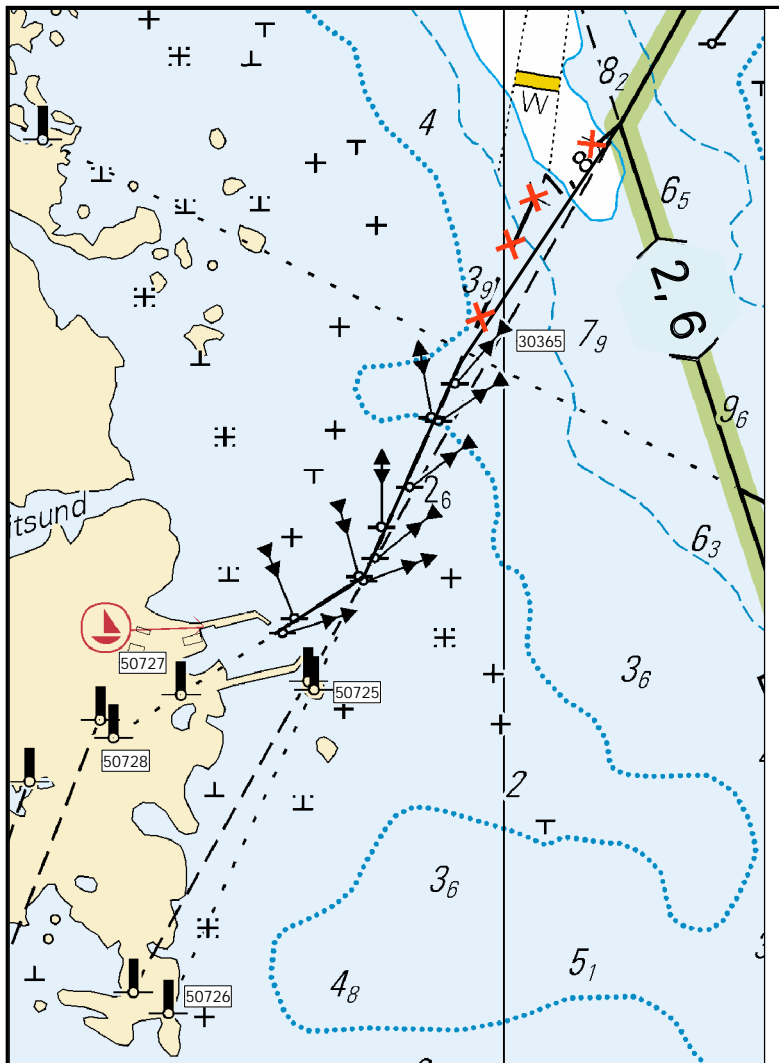
II. Linjamerkit – Ensmärken – Leading beacons (Kartta - Kort - Chart 46)

Lisää – Inför - Insert:

	Nr		WGS 84	
1)	50728		62°53.457'N	21°05.416'E
2)	50727		62°53.487'N	21°05.517'E
3)	50726		62°53.270'N	21°05.499'E
4)	50725		62°53.490'N	21°05.716'E

III. Viitan tarkistettu sijainti – Prickens position kontrollmätt – Adjusted spar buoy position: (Kartta - Kort - Chart F/816/816.2)

Nr			WGS 84	
30365		Länsi-Väst-West	62°53.706'N	21°05.937'E



Ei merikartan mittakaavassa - Inte i sjökortets skala - Not to scale of chart
(FTA, Vaasa/Vasa 2014)

*190.

46, 48, 115.B

F/816/816.3/817/818/818.2/818.3/819/820/820.2

Suomi. Selkämeri. Vaasan edusta. Maahti. Bredskäret-Storhästen -väylä (3.0 m). Väylälinjauksen muutos. Turvalaitemuutokset. Karttamerkinnän muutos.

Finland. Bottenhavet. Utanför Vasa. Malax. Farleden Bredskäret-Storhästen (3.0 m). Ändrad farledsdragning. Ändrad utprickning. Ändrad kartmarkering.

Finland. Sea of Bothnia. **Off** Vaasa. Malax. Bredskäret-Storhästen channel (3.0 m). Amended channel alignment. Amend buoyage. Amend chart.

A. Väylälinjauksen muutos – Ändrad farledsdragning – Amended channel alignment.

Väylän keskilinja – Farledens mittlinje – Fairway centre line.









WGS 84	
63°04.151'N	21°21.650'E
63°04.418'N	21°22.193'E

Poistavanha keskilinja - Stryk den befintliga mittlinjen - Delete existing centre line

B. Siirretyt viitat – Flyttade prickar – Spar buoys moved

Siirrä-Flytta-Move:

	Nr			WGS-84	
				Paikasta/Från/From	Paikkaan/Till/To
1)	8289		Vasen	62°58.095'N	62°58.286'N
			BB	21°17.424'E	21°17.895'E
			Port		
2)	8283		Oikea	63°00.075'N	63°00.026'N
			SB	21°18.942'E	21°18.946'E
			Starb.		
3)	8278		Oikea	63°00.719'N	63°00.700'N
			SB	21°18.352'E	21°18.363'E
			Starb		

4)	8275		Vasen	63°00.785'N	63°00.858'N
			BB	21°18.202'E	21°18.080'E
			Port		
5)	8274		Oikea	63°00.972'N	63°00.998'N
			SB	21°18.133'E	21°18.161'E
			Starb		
6)	8272		Vasen	63°01.069'N	63°01.098'N
			BB	21°18.054'E	21°18.047'E
			Port		
7)	8271		Oikea	63°01.125'N	63°01.112'N
			SB	21°18.131'E	21°18.129'E
			Starb		
8)	8270		Oikea	63°02.365'N	63°02.334'N
			SB	21°18.125'E	21°18.078'E
			Starb		
9)	8266		Vasen	63°04.248'N	63°04.227'N
			BB	21°21.891'E	21°21.702'E
			Port		
10)	8265		Vasen	63°04.416'N	63°04.421'N
			BB	21°22.146'E	21°22.102'E
			Port		
11)	8264		Vasen	63°04.550'N	63°04.584'N
			BB	21°22.252'E	21°22.245'E
			Port		


12)	8260		Oikea	63°06.407'N	63°06.446'N
			SB	21°21.328'E	21°21.321'E
			Starb		
13)	8259		Vasen	63°06.703'N	63°06.741'N
			BB	21°21.077'E	21°21.068'E
			Port		

C. Viittojen tarkistettu sijainti – Prickarnas positioner kontrollmätta – Adjusted sparbuoy positions:

	Nr			WGS-84	
1)	8291		Vasen-BB-Port	62°57.472'N	21°16.390'E
2)	8282		Vasen-BB-Port	63 00.167	21 18.913
3)	8279		Oikea-SB-Starb.	63 00.490	21 18.624
4)	8276		Oikea-SB-Starb.	63 00.820	21 18.235
5)	8273		Vasen-BB-Port	63 00.967	21 18.080
6)	8267		Oikea-SB-Starb.	63 03.297	21 19.967
7)	8263		Vasen-BB-Port	63°05.054	21°22.014



D. Poistettu viitta – Indragen prick – Withdrawn spar buoy

Poista – Stryk – Delete:

Nr			WGS-84	
20711		Oikea-SB-Starboard	62°56.008'N	21°13.790'E

E. Poistetut linjamerkit – Indragna ensmärken – Withdrawn leading beacons

Poista – Stryk – Delete:

	Nr		WGS 84	
1)	23604		63°04.428'N	21°22.657'E
2)	23607		63°04.508'N	21°22.947'E

(FTA, Vaasa/Vasa 2014)

*191.

54, 55, 56, 958
G/838








Suomi. Perämeri. Raahen edusta. Poistetut viitat. Karttamerkin­nän muutos.

Finland. Bottenviken. Utanför Brahestad. Indragna prickar. Ändrad kartmarkering.

Finland. Bay of Bothnia. Off Raah. Withdrawn spar buoys. Amend chart.

Poistetut viitat – Indragna prickar – Withdrawn spar buoys

Poista – Stryk – Delete:

	Nr			WGS 84		Kartta/ Kort/ Chart
1)	10380		Länsi-Väst-West	64°37.23'N	23°51.90'E	55, 958, G/838
2)	10379		Länsi-Väst-West	64 36.08	23 53.00	54, 55, 958 G/838
3)	10313		Pohj.-Nord-North	65 04.74	24 06.78	56, 958
4)	10308		Länsi-Väst-West	65 01.42	23 59.87	56, 958
5)	10312		Itä-Ost-East	65 01.39	24 09.96	56, 958
6)	10310		Etelä-Syd-South	64 58.86	24 02.15	56, 958
7)	10314		Länsi-Väst-West	65 00.45	24 22.45	56, 958

(FTA, Vaasa/Vasa 2014)
