

IAF RIVHE  
2500  
MAX IAS 230 KT

IAF / IF AKPEQ  
2500

**D** TMA  
EFKK  
FL 95  
1400

IAF VIRFA  
2500  
MAX IAS 230 KT

PBN  
RNP APCH

ACFT CAT  
B and C only

MSA  
2500  
FM ARR  
EFKA  
25 NM

RADIO DATA  
FREQ 122.800  
ACC 127.100

NOTE  
Uncontrolled  
aerodrome

EFKA RMZ  
3500 FT / SFC  
= MHA + 1000 FT  
WID: ± 3 NM  
LEN: IF + 1NM

FAF ECVIL  
2000

MAHF  
SUKWI

FAF YULFO  
2000

IAF AFFOM  
2500  
MAX IAS 230 KT

IAF KIWUC  
2500  
MAX IAS 230 KT

IAF / IF  
COTHA  
2500

**G** FIZ  
EFSI  
FL 95  
2000

EFSI FIZ UPPER

62 57 57N  
022 57 40E

62 56 41N  
023 00 21E

62 56 56N  
023 10 56E

63 17 17N  
022 55 15E

63 16 10N  
023 08 45E

752

577

809

534

531

488

449

610

376

521

466

1481

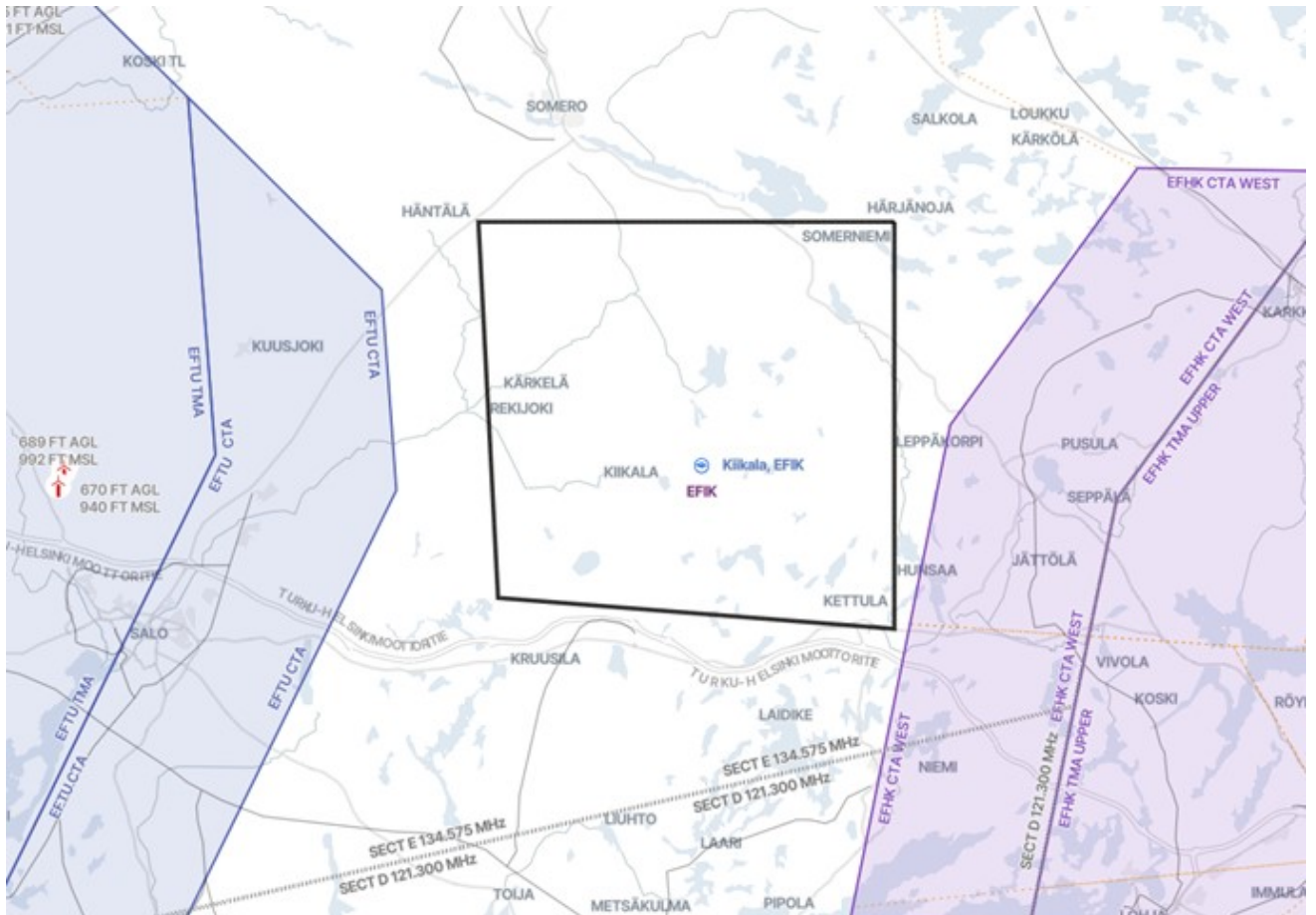
2500  
090°

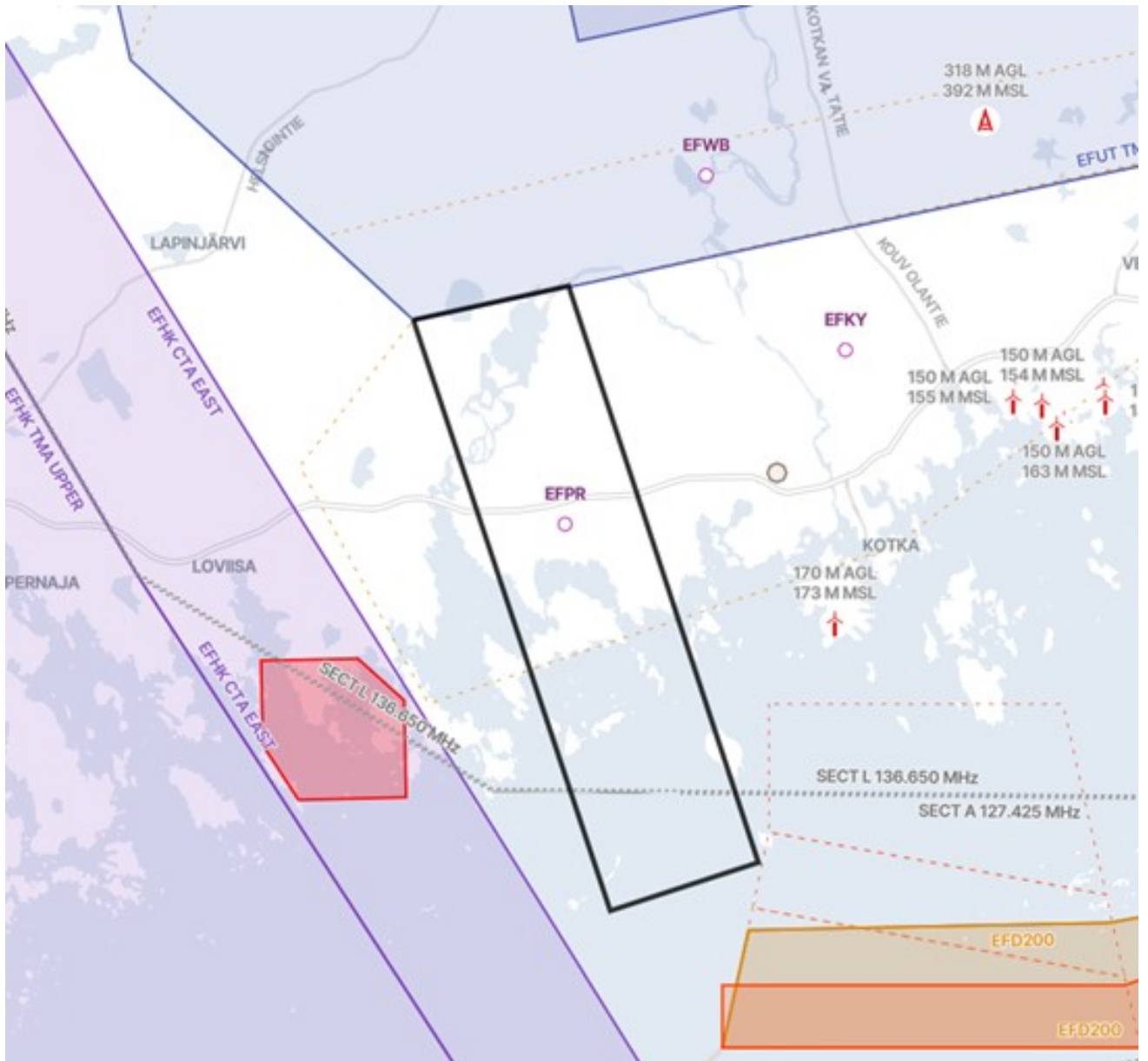
10 NM

APCH FUNNEL

EFKA RMZ

EFKK TMA

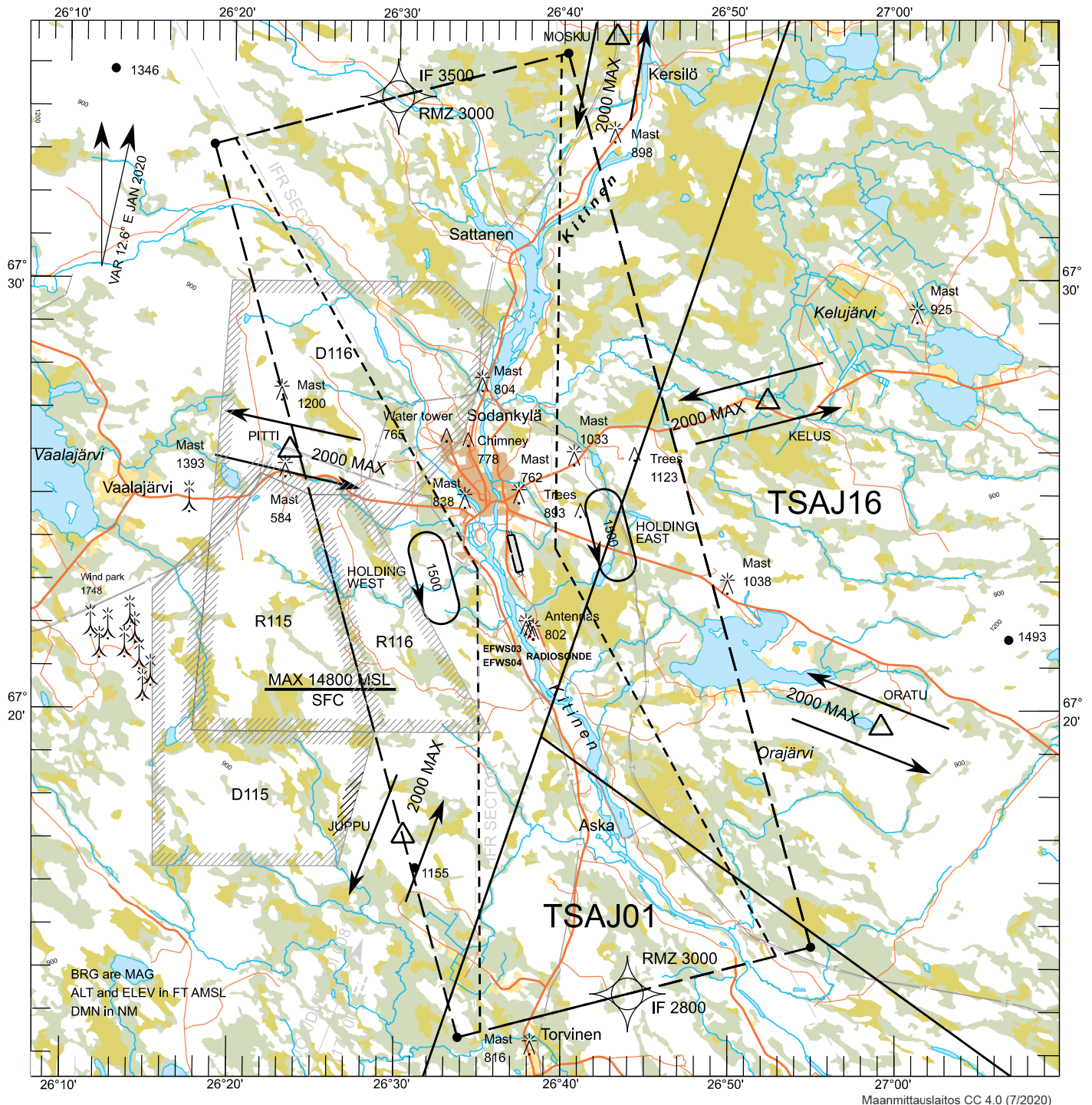




# VISUAL APPROACH CHART - ICAO

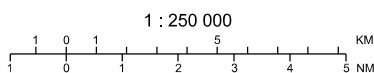
ELEV 602 FT  
67 23 48 N  
026 37 05 E

# SODANKYLÄ AERODROME SODANKYLÄ, FINLAND



Maanmittauslaitos CC 4.0 (7/2020)

EFSSO RMZ  
673310 261846 - 673520 264013 - 671435 265501 -  
671227 263351 - 673310 261846



RADIO DATA	
EFSSO	123.400
ACC SECT J	126.100
COMMON ATS	119.700
EMERGENCY	121.500

### REPORTING POINTS

JUPPU	67 17 14 N 026 30 43 E
KELUS	67 27 14 N 026 52 26 E
MOSKU	67 35 41 N 026 43 24 E
ORATU	67 19 39 N 026 59 09 E
PITTI	67 26 06 N 026 23 31 E

### ILMATILALUOKITUS

Sodankylän ilmatilaluokka on G

### ATS AIRSPACE CLASSIFICATION

The airspace class of Sodankylä is G